

Synaptophysin (ABT7R) rabbit mAb

Catalog No :	YM7214
Reactivity :	Human;
Applications :	IHC; ELISA
Target :	Synaptophysin
Gene Name :	SYP
Protein Name :	Major synaptic vesicle protein p38;MRX96;MRXSYP;Syn p38;Synaptophysin;Syp;SYPH;SYPH_HUMAN;SynI
Human Swiss Prot No :	P08247
Mouse Swiss Prot No :	Q62277
Rat Swiss Prot No :	P07825
Immunogen :	Synthesized peptide derived from human Synaptophysin AA range:50-150
Specificity :	This antibody detects endogenous levels of Synaptophysin
Formulation :	PBS, 50% glycerol, 0.05% Proclin 300, 0.05%BSA
Source :	Monoclonal, Rabbit IgG1, Kappa
Dilution :	IHC 1:100-500, ELISA 1:5000-20000
Purification :	Recombinant Expression and Affinity purified
Storage Stability :	-15°C to -25°C/1 year(Do not lower than -25°C)
Molecularweight :	34kD
Background :	This gene encodes an integral membrane protein of small synaptic vesicles in brain and endocrine cells. The protein also binds cholesterol and is thought to direct targeting of vesicle-associated membrane protein 2 (synaptobrevin) to

intracellular compartments. Mutations in this gene are associated with X-linked mental retardation (XLMR). [provided by RefSeq, Aug 2011],

Function :

domain:The calcium-binding activity is thought to be localized in the cytoplasmic tail of the protein.,function:Possibly involved in structural functions as organizing other membrane components or in targeting the vesicles to the plasma membrane.,online information:Synaptophysin entry,PTM:Ubiquitinated; mediated by SIAH1 or SIAH2 and leading to its subsequent proteasomal degradation.,similarity:Belongs to the synaptophysin/synaptobrevin family.,similarity:Contains 1 MARVEL domain.,subunit:Homohexamer or homotetramer.,tissue specificity:Characteristic of a type of small (30-80 nm) neurosecretory vesicles, including presynaptic vesicles, but also vesicles of various neuroendocrine cells of both neuronal and epithelial phenotype.,

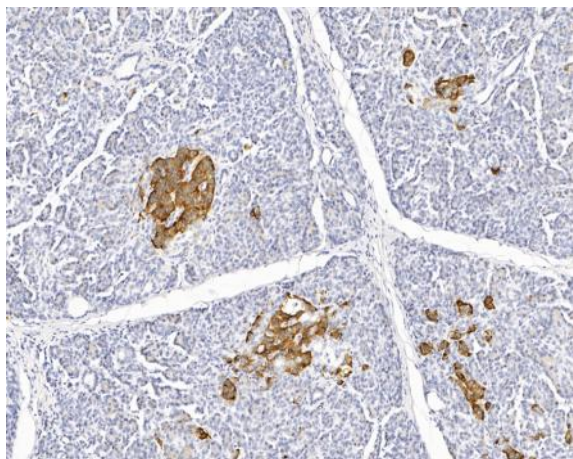
Subcellular

Cytoplasmic

Location :**Expression :**

Pancreas/ Colon

Products Images



Human pancreas tissue was stained with Anti-Synaptophysin (ABT7R) rabbit Antibody