

L-type Ca⁺⁺ CP γ 4 Polyclonal Antibody

Catalog No :	YN5521
Reactivity :	Human;Mouse;Rat
Applications :	WB;IHC;IF
Target :	L-type Ca ⁺⁺ CP γ 4
Fields :	>>MAPK signaling pathway;>>Cardiac muscle contraction;>>Adrenergic signaling in cardiomyocytes;>>Oxytocin signaling pathway;>>Hypertrophic cardiomyopathy;>>Arrhythmogenic right ventricular cardiomyopathy;>>Dilated cardiomyopathy
Gene Name :	CACNG4
Protein Name :	Voltage-dependent calcium channel gamma-4 subunit
Human Gene Id :	27092
Human Swiss Prot No :	Q9UBN1
Mouse Swiss Prot No :	Q9JJV4
Rat Swiss Prot No :	Q8VHW9
Immunogen :	Synthetic Peptide of L-type Ca ⁺⁺ CP γ 4 AA range: 120-200
Specificity :	The antibody detects endogenous L-type Ca ⁺⁺ CP γ 4 protein.
Formulation :	PBS, pH 7.4, containing 0.5%BSA, 0.02% sodium azide as Preservative and 50% Glycerol.
Source :	Polyclonal, Rabbit,IgG
Dilution :	WB 1:1000-2000 IHC 1:200-500. IF 1:50-200
Purification :	The antibody was affinity-purified from rabbit antiserum by affinity-chromatography using epitope-specific immunogen.

Storage Stability : -15°C to -25°C/1 year(Do not lower than -25°C)

Observed Band : 35kD

Cell Pathway : MAPK_ERK_Growth;MAPK_G_Protein;Cardiac muscle contraction;Hypertrophic cardiomyopathy (HCM);Arrhythmogenic right ventricular cardiomyopathy (ARVC);Dilated cardiomyopathy;

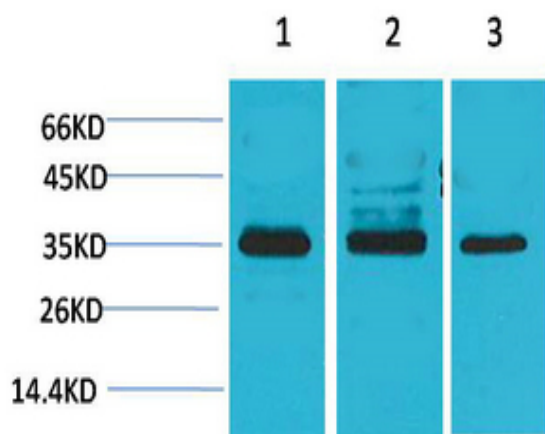
Background : calcium voltage-gated channel auxiliary subunit gamma 4(CACNG4) Homo sapiens The protein encoded by this gene is a type I transmembrane AMPA receptor regulatory protein (TARP). TARPs regulate both trafficking and channel gating of the AMPA receptors. This gene is part of a functionally diverse eight-member protein subfamily of the PMP-22/EMP/MP20 family and is located in a cluster with two family members, a type II TARP and a calcium channel gamma subunit. [provided by RefSeq, Dec 2010],

Function : function:Thought to stabilize the calcium channel in an inactivated (closed) state.,similarity:Belongs to the PMP-22/EMP/MP20 family. CACNG subfamily.,subunit:The L-type calcium channel is composed of five subunits: alpha-1, alpha-2/delta, beta and gamma.,

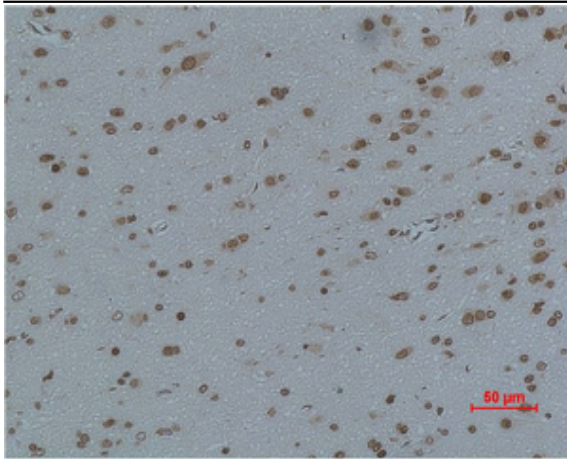
Subcellular Location : Cell membrane ; Multi-pass membrane protein .

Expression : Detected in heart left ventricle.

Products Images



Western blot analysis of 1) Human Brain Tissue, 2) Mouse Brain Tissue, 3) Rat Brain Tissue using L-type Ca⁺⁺ CP γ 4 Polyclonal Antibody. Secondary antibody(catalog#:RS0002) was diluted at 1:20000



Immunohistochemical analysis of paraffin-embedded Rat Brain Tissue using L-type Ca⁺⁺ CP γ 4 Polyclonal Antibody.