

## Mas1 Polyclonal Antibody

<b>Catalog No :</b>	YN5519
<b>Reactivity :</b>	Human;Mouse;Rat
<b>Applications :</b>	WB;IHC;IF
<b>Target :</b>	Mas1
<b>Fields :</b>	>>Neuroactive ligand-receptor interaction;>>Renin-angiotensin system;>>Coronavirus disease - COVID-19
<b>Gene Name :</b>	MAS1
<b>Protein Name :</b>	Proto-oncogene Mas
<b>Human Gene Id :</b>	4142
<b>Human Swiss Prot No :</b>	P04201
<b>Mouse Swiss Prot No :</b>	P30554
<b>Rat Swiss Prot No :</b>	P12526
<b>Immunogen :</b>	Synthetic Peptide of Mas1
<b>Specificity :</b>	The antibody detects endogenous Mas1 protein.
<b>Formulation :</b>	PBS, pH 7.4, containing 0.5%BSA, 0.02% sodium azide as Preservative and 50% Glycerol.
<b>Source :</b>	Polyclonal, Rabbit,IgG
<b>Dilution :</b>	WB 1:2000-5000 IHC 1:200-500. IF 1:50-200
<b>Purification :</b>	The antibody was affinity-purified from rabbit antiserum by affinity-chromatography using epitope-specific immunogen.
<b>Storage Stability :</b>	-15°C to -25°C/1 year(Do not lower than -25°C)

**Observed Band :** 36-50kD

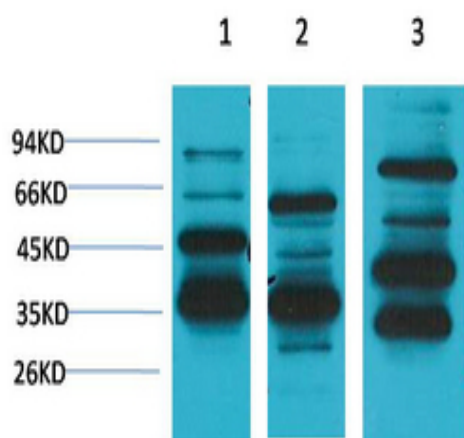
**Cell Pathway :** Neuroactive ligand-receptor interaction;Renin-angiotensin system;

**Background :** This gene encodes a class I seven-transmembrane G-protein-coupled receptor. The encoded protein is a receptor for angiotensin-(1-7) and preferentially couples to the Gq protein, activating the phospholipase C signaling pathway. The encoded protein may play a role in multiple processes including hypotension, smooth muscle relaxation and cardioprotection by mediating the effects of angiotensin-(1-7). [provided by RefSeq, May 2012],

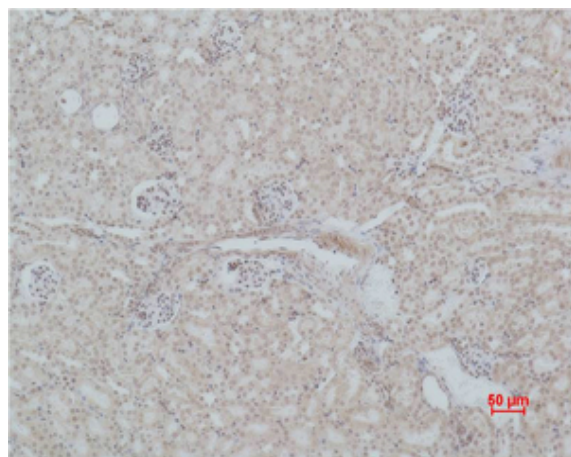
**Function :** caution:Was originally (PubMed:3419518) thought to be a receptor for angiotensin II.,disease:The MAS oncogene has a weak focus-inducing activity in transfected NIH 3T3 cells.,similarity:Belongs to the G-protein coupled receptor 1 family.,

**Subcellular Location :** Cell membrane ; Multi-pass membrane protein .

## Products Images



Western blot analysis of 1) Human Brain Tissue, 2) Mouse Brain Tissue, 3) Rat Brain Tissue using Mas1 Polyclonal Antibody. Secondary antibody(catalog#:RS0002) was diluted at 1:20000



Immunohistochemical analysis of paraffin-embedded Mouse Kidney Tissue using Mas1 Polyclonal Antibody.