

PEPC Polyclonal Antibody

Catalog No :	YN5494
Reactivity :	A. comosus, A. thaliana, H. vulgare, J. curcas, M. crystallinum, N. tabacum, Z. mays, T. weissfloggi,
Applications :	WB
Target :	Phosphoenolpyruvate carboxylase
Gene Name :	PGC
Protein Name :	Phosphoenolpyruvate carboxylase
Immunogen :	Synthetic Peptide of PEPC
Specificity :	The antibody detects endogenous PEPC protein.
Formulation :	PBS, pH 7.4, containing 0.5%BSA, 0.02% sodium azide as Preservative and 50% Glycerol.
Source :	Polyclonal, Rabbit,IgG
Dilution :	WB 1:2000-5000
Purification :	The antibody was affinity-purified from rabbit antiserum by affinity-chromatography using epitope-specific immunogen.
Storage Stability :	-15°C to -25°C/1 year(Do not lower than -25°C)
Observed Band :	105-109kD
Background :	This gene encodes an aspartic proteinase that belongs to the peptidase family A1. The encoded protein is a digestive enzyme that is produced in the stomach and constitutes a major component of the gastric mucosa. This protein is also secreted into the serum. This protein is synthesized as an inactive zymogen that includes a highly basic prosegment. This enzyme is converted into its active mature form at low pH by sequential cleavage of the prosegment that is carried out by the enzyme itself. Polymorphisms in this gene are associated with susceptibility to gastric cancers. Serum levels of this enzyme are used as a

biomarker for certain gastric diseases including Helicobacter pylori related gastritis. Alternate splicing results in multiple transcript variants. A pseudogene of this gene is found on chromosome 1. [provided by RefSeq, Oct 2009],

Function :

catalytic activity:More restricted specificity than pepsin A, but shows preferential cleavage at Tyr-|-Xaa bonds. High activity on hemoglobin.,function:Hydrolyzes a variety of proteins.,similarity:Belongs to the peptidase A1 family.,

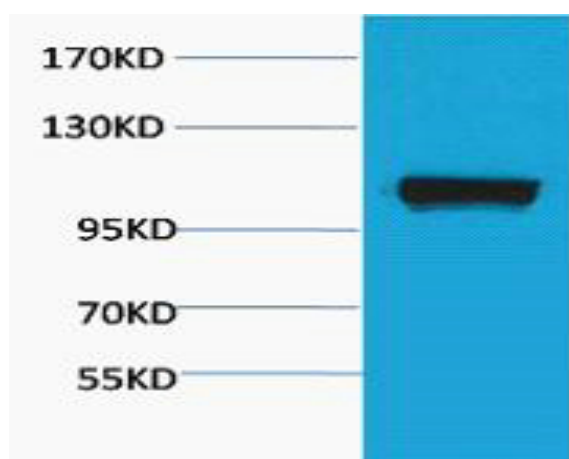
Subcellular Location :

extracellular space,extracellular exosome,

Expression :

Brain,Liver,Placenta,Stomach,

Products Images



Western blot analysis of Maize, diluted at 1:4000. Secondary antibody(catalog#:RS0002) was diluted at 1:20000