

Claudin 2 (PT0311) Mouse mAb

| | |
|------------------------------|---|
| Catalog No : | YM4159 |
| Reactivity : | Human |
| Applications : | WB;IHC;ELISA |
| Target : | Claudin-2 |
| Fields : | >>Cell adhesion molecules;>>Tight junction;>>Leukocyte transendothelial migration;>>Pathogenic Escherichia coli infection;>>Hepatitis C |
| Gene Name : | CLDN2 PSEC0059 SP82 UNQ705/PRO1356 |
| Protein Name : | Claudin 2 |
| Human Gene Id : | 9075 |
| Human Swiss Prot No : | P57739 |
| Immunogen : | Synthesized peptide derived from human Claudin 2 AA range: 150-250 |
| Specificity : | This antibody detects endogenous levels of human Claudin 2 |
| Formulation : | Liquid in PBS containing 50% glycerol, 0.5% BSA and 0.02% sodium azide. |
| Source : | Mouse, Monoclonal/IgG2b, Kappa |
| Dilution : | IHC 1:100-300, WB 1:500-2000, ELISA 1:5000-20000 |
| Purification : | The antibody was affinity-purified from mouse ascites by affinity-chromatography using specific immunogen. |
| Storage Stability : | -15°C to -25°C/1 year(Do not lower than -25°C) |
| Molecularweight : | 25kD |
| Background : | This gene product belongs to the claudin protein family whose members have been identified as major integral membrane proteins localized exclusively at tight |

junctions. Claudins are expressed in an organ-specific manner and regulate tissue-specific physiologic properties of tight junctions. This protein is expressed in the intestine. Alternatively spliced transcript variants with different 5' untranslated region have been found for this gene.[provided by RefSeq, Jan 2010],

Function :

function:Plays a major role in tight junction-specific obliteration of the intercellular space, through calcium-independent cell-adhesion activity.,similarity:Belongs to the claudin family.,subunit:Can form homo- and heteropolymers with other CLDN. Homopolymers interact with CLDN3, but not CLDN1, homopolymers. Directly interacts with TJP1/ZO-1, TJP2/ZO-2 and TJP3/ZO-3.,

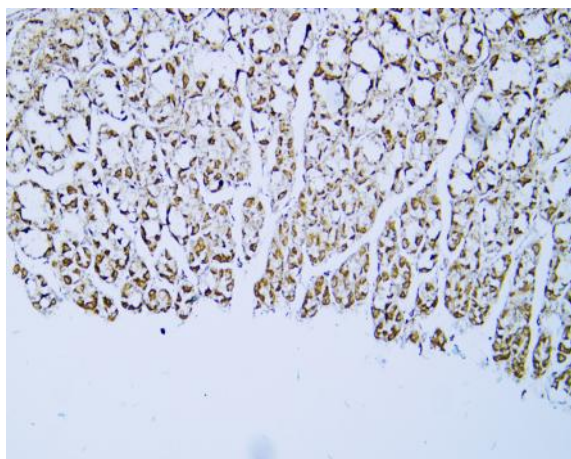
Subcellular Location :

Cell junction, tight junction . Cell membrane ; Multi-pass membrane protein .

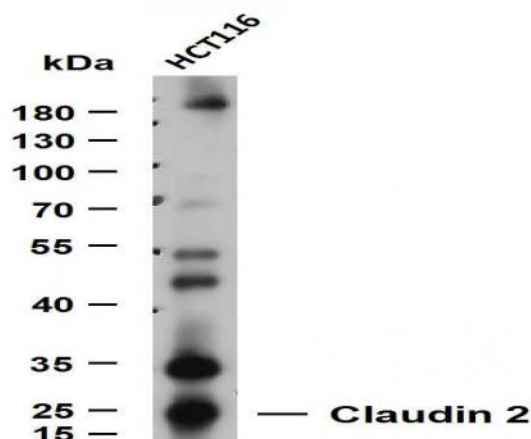
Expression :

Colon,Colon epithelium,Kidney,Skin,Teratocarcinoma,Thalamus,

Products Images



Human stomach tissue was stained with Anti-Claudin 2 (PT0311) Antibody



Whole cell lysates were separated by 10% SDS-PAGE, and the membrane was blotted with anti-Claudin 2 (PT0311) antibody. The HRP-conjugated Goat anti-Mouse IgG(H + L) antibody was used to detect the antibody. Lane 1: HCT116 Predicted band size: 29kDa Observed band size: 50kDa