

S100A6 (ABT179R) rabbit mAb

Catalog No :	YM7275
Reactivity :	Human;
Applications :	IHC; ELISA
Target :	S100A6
Gene Name :	S100A6
Protein Name :	S100A6
Human Gene Id :	6277
Human Swiss Prot No :	P06703
Immunogen :	Synthesized peptide derived from human S100A6 AA range:50-90
Specificity :	This antibody detects endogenous levels of S100A6
Formulation :	PBS, 50% glycerol, 0.05% Proclin 300, 0.05%BSA
Source :	Monoclonal, Rabbit IgG1, Kappa
Dilution :	IHC 1:100-500, ELISA 1:5000-20000
Purification :	Recombinant Expression and Affinity purified
Storage Stability :	-15°C to -25°C/1 year(Do not lower than -25°C)
Background :	<p>S100 calcium binding protein A6(S100A6) Homo sapiens The protein encoded by this gene is a member of the S100 family of proteins containing 2 EF-hand calcium-binding motifs. S100 proteins are localized in the cytoplasm and/or nucleus of a wide range of cells, and involved in the regulation of a number of cellular processes such as cell cycle progression and differentiation. S100 genes include at least 13 members which are located as a cluster on chromosome 1q21. This protein may function in stimulation of Ca²⁺-dependent insulin release, stimulation of prolactin secretion, and exocytosis. Chromosomal rearrangements and altered expression of this gene have been implicated in melanoma. [provided</p>

by RefSeq, Jul 2008],

Function :

induction: Preferentially expressed when quiescent fibroblasts are stimulated to proliferate. It is inducible by growth factors and overexpressed in acute myeloid leukemias.,miscellaneous: This protein co-purified with the prolactin receptor.,PTM: The N-terminus is blocked.,similarity: Belongs to the S-100 family.,similarity: Contains 2 EF-hand domains.,subunit: Homodimer, antiparallel. Interacts with SUGT1.,

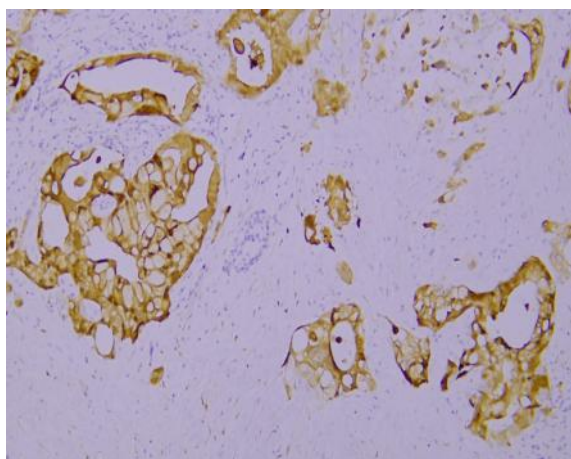
Subcellular Location :

Nuclear, Cytoplasmic

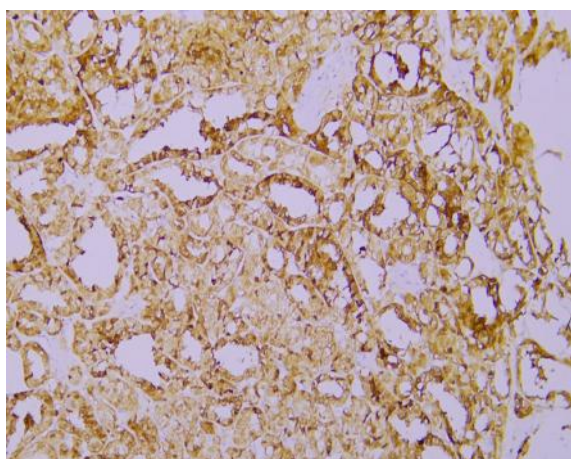
Expression :

Brain, Fibroblast, Placenta, Platelet,

Products Images



Immunohistochemical analysis of paraffin-embedded human Pancreatic carcinoma. 1, Antibody was incubated at 4° overnight. 2, TRIS-EDTA of pH8.0 was used for antigen retrieval. 3, Secondary antibody was diluted at 1:200 (room temperature, 30min).



Immunohistochemical analysis of paraffin-embedded human Papillary thyroid carcinoma. 1, Antibody was incubated at 4° overnight. 2, TRIS-EDTA of pH8.0 was used for antigen retrieval. 3, Secondary antibody was diluted at 1:200 (room temperature, 30min).