

## CD23 (ABT128R) rabbit mAb

<b>Catalog No :</b>	YM7254
<b>Reactivity :</b>	Human;
<b>Applications :</b>	IHC; ELISA
<b>Target :</b>	CD23
<b>Fields :</b>	>>Hematopoietic cell lineage;>>Epstein-Barr virus infection
<b>Gene Name :</b>	FCER2
<b>Protein Name :</b>	Low affinity immunoglobulin epsilon Fc receptor (BLAST-2) (C-type lectin domain family 4 member J) (Fc-epsilon-RII) (Immunoglobulin E-binding factor) (Lymphocyte IgE receptor) (CD antigen CD23) [Cleav
<b>Human Gene Id :</b>	2208
<b>Human Swiss Prot No :</b>	P06734
<b>Immunogen :</b>	Synthesized peptide derived from human CD23 AA range:200-321
<b>Specificity :</b>	This antibody detects endogenous levels of CD23
<b>Formulation :</b>	PBS, 50% glycerol, 0.05% Proclin 300, 0.05%BSA
<b>Source :</b>	Monoclonal, Rabbit IgG1, Kappa
<b>Dilution :</b>	IHC 1:100-500, ELISA 1:5000-20000
<b>Purification :</b>	Recombinant Expression and Affinity purified
<b>Storage Stability :</b>	-15°C to -25°C/1 year(Do not lower than -25°C)
<b>Cell Pathway :</b>	Hematopoietic cell lineage;
<b>Background :</b>	The protein encoded by this gene is a B-cell specific antigen, and a low-affinity receptor for IgE. It has essential roles in B cell growth and differentiation, and the

regulation of IgE production. This protein also exists as a soluble secreted form, then functioning as a potent mitogenic growth factor. Alternatively spliced transcript variants encoding different isoforms have been described for this gene.[provided by RefSeq, Jul 2011],

---

**Function :**

function:This receptor has essential roles in the regulation of IgE production and in the differentiation of B-cells (it is a B-cell-specific antigen).,miscellaneous:There are two kinds of Fc receptors for IgE, which differ in both structure and function: high affinity receptors on basophils and mast cells and low affinity receptors on lymphocytes and monocytes.,online information:CD23,PTM:N- and O-glycosylated.,similarity:Contains 1 C-type lectin domain.,subcellular location:Also exists as a soluble excreted form.,

---

**Subcellular Location :**

Membranous

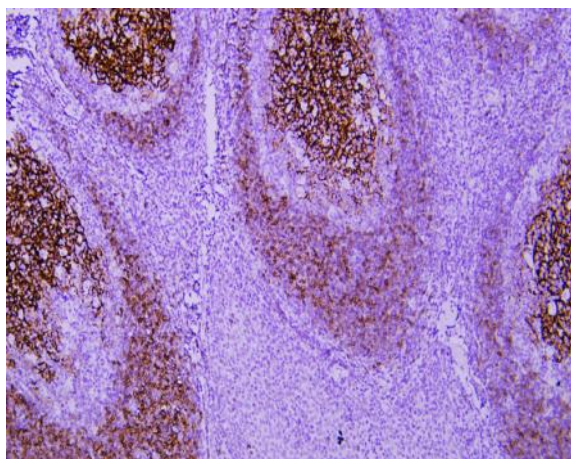
---

**Expression :**

B-cell,Blood,

---

## Products Images



Immunohistochemical analysis of paraffin-embedded human Tonsil. 1, Antibody was incubated at 4° overnight. 2, Citrate buffer of pH6.0 was used for antigen retrieval. 3,Secondary antibody was diluted at 1:200(room temperature, 30min).