

## CD206 (PTR2276) mouse mAb

<b>Catalog No :</b>	YM4678
<b>Reactivity :</b>	Human;Mouse;Rat;
<b>Applications :</b>	WB;IF;ELISA
<b>Target :</b>	CD206
<b>Fields :</b>	>>Phagosome;>>Tuberculosis
<b>Gene Name :</b>	MRC1
<b>Protein Name :</b>	Macrophage mannose receptor 1
<b>Human Gene Id :</b>	4360
<b>Human Swiss Prot No :</b>	P22897
<b>Mouse Gene Id :</b>	17533
<b>Mouse Swiss Prot No :</b>	Q61830
<b>Immunogen :</b>	Synthesized peptide derived from human protein.AA range:750-850
<b>Specificity :</b>	This antibody detects endogenous levels of CD206.
<b>Formulation :</b>	PBS, 50% glycerol, 0.05% Proclin 300, 0.05%BSA
<b>Source :</b>	Mouse, Monoclonal/IgG1, kappa
<b>Dilution :</b>	WB 1:500-2000. IF 1:100-500. ELISA 1:1000-5000
<b>Purification :</b>	Protein G
<b>Storage Stability :</b>	-15°C to -25°C/1 year(Do not lower than -25°C)
<b>Molecularweight :</b>	166kD

**Observed Band :** 190kD

### Background :

The recognition of complex carbohydrate structures on glycoproteins is an important part of several biological processes, including cell-cell recognition, serum glycoprotein turnover, and neutralization of pathogens. The protein encoded by this gene is a type I membrane receptor that mediates the endocytosis of glycoproteins by macrophages. The protein has been shown to bind high-mannose structures on the surface of potentially pathogenic viruses, bacteria, and fungi so that they can be neutralized by phagocytic engulfment.[provided by RefSeq, Sep 2015],

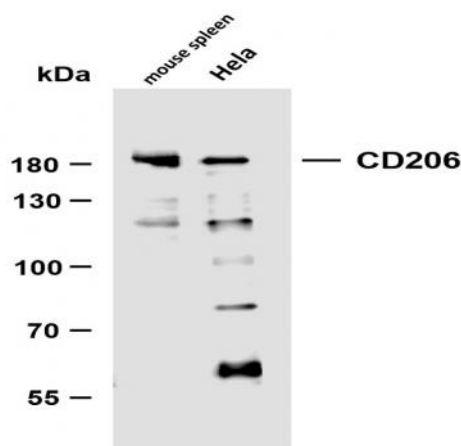
### Function :

function:Mediates the endocytosis of glycoproteins by macrophages. Binds both sulfated and non-sulfated polysaccharide chains. Acts as phagocytic receptor for bacteria, fungi and other pathogens.,miscellaneous:CRDs 1-3 have at most very weak affinity for carbohydrate. CRD 4 shows the highest affinity binding and has multispecificity for a variety of monosaccharides. At least 3 CRDs (4, 5, and 7) are required for high affinity binding and endocytosis of multivalent glycoconjugates.,online information:Macrophage mannose receptor,similarity:Contains 1 fibronectin type-II domain.,similarity:Contains 1 ricin B-type lectin domain.,similarity:Contains 8 C-type lectin domains.,

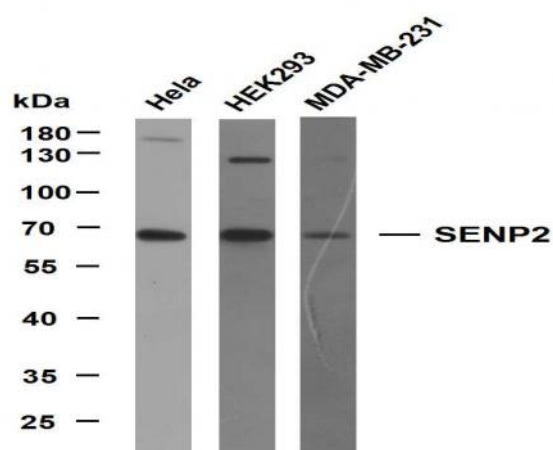
### Expression :

Milk,Placenta,Testis,

## Products Images



Various whole cell lysates were separated by 8% SDS-PAGE, and the membrane was blotted with anti-CD206 (PTR2276) antibody. The HRP-conjugated Goat anti-Mouse IgG(H + L) antibody was used to detect the antibody. Lane 1: mouse spleen  
Lane 2: HeLa



Various whole cell lysates were separated by 10% SDS-PAGE, and the membrane was blotted with anti-SENP2 antibody. The HRP-conjugated Goat anti-Mouse IgG(H + L) antibody was used to detect the antibody. Lane 1: HeLa Lane 2: HEK293 Lane 3: MDA-MB-231