

Clusterin (PTR1351) mouse mAb

Catalog No :	YM4626
Reactivity :	Human;Mouse;Rat;
Applications :	WB;IF;ELISA
Target :	Clusterin
Fields :	>>Complement and coagulation cascades
Gene Name :	CLU
Protein Name :	Clusterin
Human Gene Id :	1191
Human Swiss Prot No :	P10909
Mouse Gene Id :	12759
Mouse Swiss Prot No :	Q06890
Rat Gene Id :	24854
Rat Swiss Prot No :	P05371
Immunogen :	Synthesized peptide derived from human protein.AA range:350-449
Specificity :	This antibody detects endogenous levels of Clusterin.
Formulation :	PBS, 50% glycerol, 0.05% Proclin 300, 0.05%BSA
Source :	Mouse, Monoclonal/IgG1, kappa
Dilution :	WB 1:500-2000. IF 1:100-500. ELISA 1:1000-5000
Purification :	Protein G

Storage Stability : -15°C to -25°C/1 year(Do not lower than -25°C)

Molecularweight : 68kD

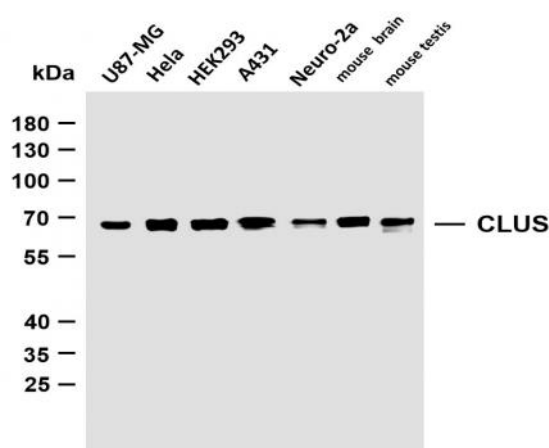
Observed Band : 68kD

Background : The protein encoded by this gene is a secreted chaperone that can under some stress conditions also be found in the cell cytosol. It has been suggested to be involved in several basic biological events such as cell death, tumor progression, and neurodegenerative disorders. Alternate splicing results in both coding and non-coding variants.[provided by RefSeq, May 2011],

Function : function:Not yet clear. It is known to be expressed in a variety of tissues and it seems to be able to bind to cells, membranes and hydrophobic proteins. It has been associated with programmed cell death (apoptosis).,similarity:Belongs to the clusterin family.,subunit:Antiparallel disulfide-linked heterodimer. Interacts with APOA1, CLUAP1 AND PON1.,

Expression : Detected in blood plasma, cerebrospinal fluid, milk, seminal plasma and colon mucosa. Detected in the germinal center of colon lymphoid nodules and in colon parasympathetic ganglia of the Auerbach plexus (at protein level). Ubiquitous. Detected in brain, testis, ovary, liver and pancreas, and at lower levels in kidney, heart, spleen and lung.

Products Images



Various whole cell lysates were separated by 4-20% SDS-PAGE, and the membrane was blotted with anti-Clusterin (PTR1351) antibody. The HRP-conjugated Goat anti-Mouse IgG(H + L) antibody was used to detect the antibody. Lane 1: U87-MG Lane 2: HeLa Lane 3: HEK293 Lane 4: A431 Lane 5:Neuro-2a Lane 6:mouse brain Lane 7:mouse testis