

CD20 (PTR1337) mouse mAb

Catalog No :	YM4751
Reactivity :	Mouse;Rat;
Applications :	IHC;IF;ELISA
Target :	CD20
Fields :	>>Hematopoietic cell lineage
Gene Name :	MS4A1 CD20
Protein Name :	CD20
Human Swiss Prot No :	P11836
Mouse Gene Id :	12482
Mouse Swiss Prot No :	P19437
Rat Gene Id :	309217
Rat Swiss Prot No :	D4A4Y3
Immunogen :	Synthesized peptide derived from human CD20 AA range: 200-297
Specificity :	This antibody detects endogenous levels of CD20 protein.
Formulation :	PBS, 50% glycerol, 0.05% Proclin 300, 0.05%BSA
Source :	Mouse, Monoclonal/IgG1, kappa
Dilution :	IHC 1:200-1000. IF 1:100-500. ELISA 1:1000-5000
Purification :	Protein G
Storage Stability :	-15°C to -25°C/1 year(Do not lower than -25°C)

Molecularweight : 33kD

Observed Band : 35kD

Background :

This gene encodes a member of the membrane-spanning 4A gene family. Members of this nascent protein family are characterized by common structural features and similar intron/exon splice boundaries and display unique expression patterns among hematopoietic cells and nonlymphoid tissues. This gene encodes a B-lymphocyte surface molecule which plays a role in the development and differentiation of B-cells into plasma cells. This family member is localized to 11q12, among a cluster of family members. Alternative splicing of this gene results in two transcript variants which encode the same protein. [provided by RefSeq, Jul 2008],

Function :

caution:Epitope 1, mapped in PubMed:16785532, is predicted to be buried in the membrane. Its accessibility to the extracellular space, and thus to antibody recognition, is not explained.,function:This protein may be involved in the regulation of B-cell activation and proliferation.,online information:CD20 entry,pharmaceutical:Monoclonal antibodies(mAb) against CD20 are used to treat B-cell non-Hodgkin's lymphoma (NHL). These antibodies include Rituximab (Mabthera), Britumomab (Zevalin) and Tositumomab (Bexxar). CD20 engaged by mAb can generate transmembrane signals capable of directly controlling cell growth and triggering cell death in certain tumors. Alternatively, mAb can mediate complement-dependent cytotoxicity.,PTM:Phosphorylated. Might be functionally regulated by protein kinase(s).,similarity:Belongs to the MS4A family.,tissue specificity:Expressed on B-cells.,

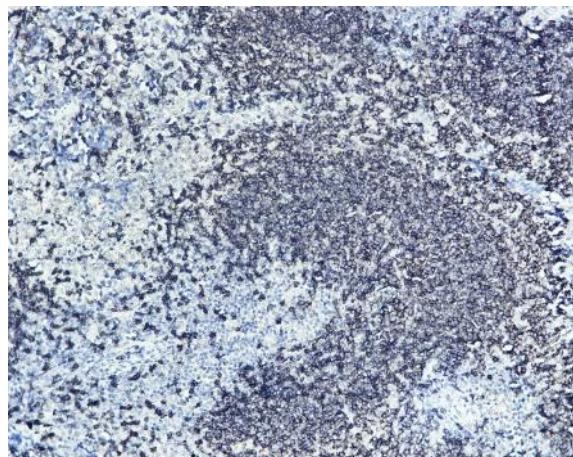
Subcellular Location :

Membranous

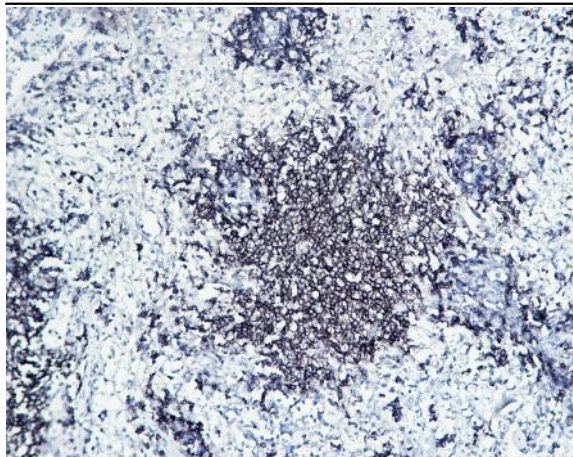
Expression :

Expressed on B-cells.

Products Images



Mouse spleen tissue was stained with Anti-CD20 (PTR1337) Antibody



Rat spleen tissue was stained with Anti-CD20 (PTR1337) Antibody