

GMCLL rabbit pAb

Catalog No :	YN4083
Reactivity :	Human;Mouse
Applications :	WB
Target :	GMCLL
Gene Name :	GMCL1P1 GCL GMCL1L
Protein Name :	GMCLL
Human Swiss Prot No :	Q8NEA9
Mouse Gene Id :	100040533
Mouse Swiss Prot No :	Q99N64
Immunogen :	Synthesized peptide derived from human GMCLL AA range: 20-70
Specificity :	This antibody detects endogenous levels of GMCLL at Human/Mouse
Formulation :	Liquid in PBS containing 50% glycerol, 0.5% BSA and 0.02% sodium azide.
Source :	Polyclonal, Rabbit,IgG
Dilution :	WB 1:500-2000
Purification :	The antibody was affinity-purified from rabbit antiserum by affinity-chromatography using epitope-specific immunogen.
Concentration :	1 mg/ml
Storage Stability :	-15°C to -25°C/1 year(Do not lower than -25°C)
Molecularweight :	58kD

Background :

This locus shares a high degree of identity with the multi-exon germ cell-less gene on chromosome 2. Despite its single-exon nature, this chromosome 5 locus contains an open reading frame that could putatively encode a full-length germ cell-less related protein. [provided by RefSeq, Jul 2008],

Function :

function:Possible function in spermatogenesis. Enhances the degradation of MDM2 and increases the amount of p53 probably by modulating the nucleocytoplasmic transport (By similarity). Probable substrate-specific adapter of an E3 ubiquitin-protein ligase complex which mediates the ubiquitination and subsequent proteasomal degradation of target proteins.,function:Possible function in spermatogenesis. Enhances the degradation of MDM2 and increases the amount of p53 probably by modulating the nucleocytoplasmic transport.,pathway:Protein modification; protein ubiquitination.,similarity:Contains 1 BTB (POZ) domain.,subunit:Interacts with TMPO-beta, TSG101 and TFDP2 (By similarity). Interacts with EMD.,subunit:Interacts with TMPO-Beta, TSG101 and TFDP2. Interacts with EMD (By similarity). Interacts with CUL3.,

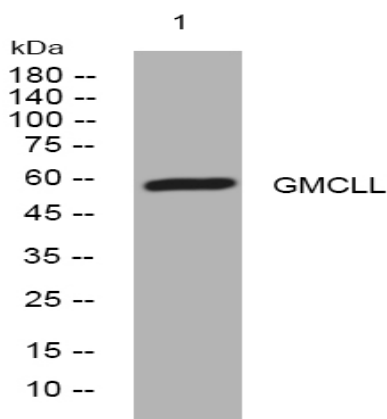
Subcellular Location :

Nucleus matrix .

Expression :

Expressed predominantly in testis.

Products Images



Western blot analysis of lysates from DU145 cells, primary antibody was diluted at 1:1000, 4° over night