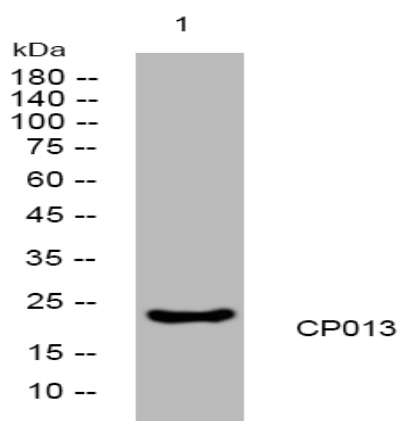


## CP013 rabbit pAb

<b>Catalog No :</b>	YN3735
<b>Reactivity :</b>	Human;Mouse;Rat
<b>Applications :</b>	WB
<b>Target :</b>	CP013
<b>Gene Name :</b>	C16orf13 JFP2
<b>Protein Name :</b>	CP013
<b>Human Gene Id :</b>	84326
<b>Human Swiss Prot No :</b>	Q96S19
<b>Mouse Gene Id :</b>	68347
<b>Mouse Swiss Prot No :</b>	Q9DCS2
<b>Rat Gene Id :</b>	302998
<b>Rat Swiss Prot No :</b>	Q497C3
<b>Immunogen :</b>	Synthesized peptide derived from human CP013 AA range: 115-165
<b>Specificity :</b>	This antibody detects endogenous levels of CP013 at Human/Mouse/Rat
<b>Formulation :</b>	Liquid in PBS containing 50% glycerol, 0.5% BSA and 0.02% sodium azide.
<b>Source :</b>	Polyclonal, Rabbit,IgG
<b>Dilution :</b>	WB 1:500-2000
<b>Purification :</b>	The antibody was affinity-purified from rabbit antiserum by affinity-chromatography using epitope-specific immunogen.

**Concentration :** 1 mg/ml**Storage Stability :** -15°C to -25°C/1 year(Do not lower than -25°C)**Molecularweight :** 22kD**Function :** similarity:Belongs to the UPF0585 family.,

## Products Images



Western blot analysis of lysates from PC-12 cells, primary antibody was diluted at 1:1000, 4° over night