

MGMT (PTR2300) mouse mAb

Catalog No :	YM4650
Reactivity :	Human;
Applications :	WB;IF;ELISA
Target :	MGMT
Gene Name :	MGMT
Protein Name :	Methylated-DNA--protein-cysteine methyltransferase (EC 2.1.1.63) (6-O-methylguanine-DNA methyltransferase) (MGMT) (O-6-methylguanine-DNA-alkyltransferase)
Human Swiss Prot No :	P16455
Mouse Gene Id :	17314
Mouse Swiss Prot No :	P26187
Immunogen :	Synthesized peptide derived from human MGMT AA range: 1-100
Specificity :	This antibody detects endogenous levels of MGMT protein.
Formulation :	PBS, 50% glycerol, 0.05% Proclin 300, 0.05%BSA
Source :	Mouse, Monoclonal/IgG2b, kappa
Dilution :	WB 1:500-2000. IF 1:100-500. ELISA 1:1000-5000
Purification :	Protein G
Concentration :	1 mg/ml
Storage Stability :	-15°C to -25°C/1 year(Do not lower than -25°C)
Molecularweight :	22kD

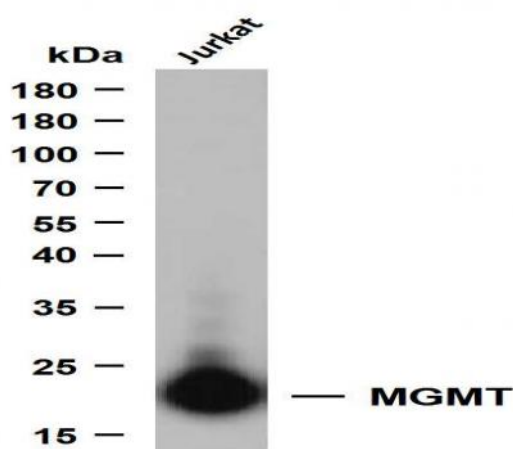
Observed Band : 22kD

Background : O-6-methylguanine-DNA methyltransferase(MGMT) Homo sapiens Alkylating agents are potent carcinogens that can result in cell death, mutation and cancer. The protein encoded by this gene is a DNA repair protein that is involved in cellular defense against mutagenesis and toxicity from alkylating agents. The protein catalyzes transfer of methyl groups from O(6)-alkylguanine and other methylated moieties of the DNA to its own molecule, which repairs the toxic lesions. Methylation of the genes promoter has been associated with several cancer types, including colorectal cancer, lung cancer, lymphoma and glioblastoma. [provided by RefSeq, Sep 2015],

Function : Involved in the cellular defense against the biological effects of O6-methylguanine (O6-MeG) and O4-methylthymine (O4-MeT) in DNA. Repairs the methylated nucleobase in DNA by stoichiometrically transferring the methyl group to a cysteine residue in the enzyme. This is a suicide reaction: the enzyme is irreversibly inactivated.

Subcellular Location : Nuclear

Products Images



Whole cell lysates were separated by 10% SDS-PAGE, and the membrane was blotted with anti-MGMT (PTR2300) antibody. The HRP-conjugated Goat anti-Mouse IgG(H + L) antibody was used to detect the antibody. Lane 1: Jurkat