

p40 rabbit mAb(ABT37R)

Catalog No :	YM7280
Reactivity :	Human
Applications :	IHC;IF;ELISA
Target :	p40/p63
Fields :	>>MicroRNAs in cancer
Gene Name :	TP63 KET P63 P73H P73L TP73L
Protein Name :	p40
Human Gene Id :	3662
Human Swiss Prot No :	Q9H3D4
Immunogen :	Synthesized peptide derived from human p40
Specificity :	This antibody detects endogenous levels of p40 at Human
Formulation :	Liquid in PBS containing 50% glycerol, 0.5% BSA and 0.02% sodium azide.
Source :	Monoclonal, Rabbit,IgG1, Kappa
Dilution :	IHC 1:50-1:200. IF 1:50-200, ELISA 1:5000-20000
Purification :	The antibody was affinity-purified from Cell supernatant by affinity-chromatography using specific immunogen.
Storage Stability :	-15°C to -25°C/1 year(Do not lower than -25°C)
Function :	cofactor: Binds 1 zinc ion per subunit.,disease: Defects in TP63 are a cause of cervical, colon, head and neck, lung and ovarian cancers.,disease: Defects in TP63 are a cause of ectodermal dysplasia Rapp-Hodgkin type (EDRH) [MIM:129400]; also called Rapp-Hodgkin syndrome or anhidrotic ectodermal dysplasia with cleft lip/palate. Ectodermal dysplasia defines a heterogeneous

group of disorders due to abnormal development of two or more ectodermal structures. EDRH is characterized by the combination of anhidrotic ectodermal dysplasia, cleft lip, and cleft palate. The clinical syndrome is comprised of a characteristic facies (narrow nose and small mouth), wiry, slow-growing, and uncombable hair, sparse eyelashes and eyebrows, obstructed lacrimal puncta/epiphora, bilateral stenosis of external auditory canals, microsomia, hypodontia, cone-shaped incisors, enamel hypoplasia, dystrophic nails, and

Subcellular

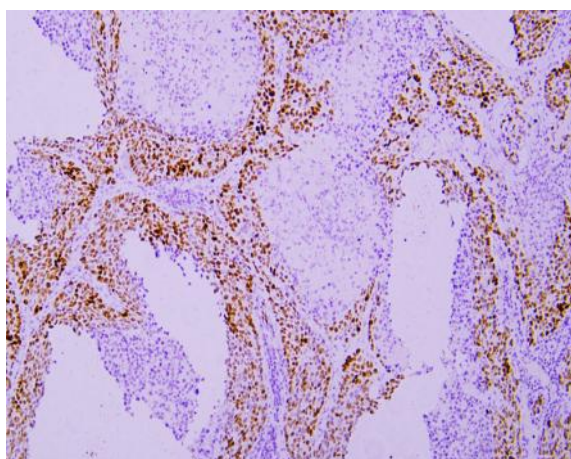
Location :

Nucleus .

Expression :

Widely expressed, notably in heart, kidney, placenta, prostate, skeletal muscle, testis and thymus, although the precise isoform varies according to tissue type. Progenitor cell layers of skin, breast, eye and prostate express high levels of DeltaN-type isoforms. Isoform 10 is predominantly expressed in skin squamous cell carcinomas, but not in normal skin tissues.

Products Images



Immunohistochemical analysis of paraffin-embedded human Lung squamous cell carcinoma. 1, Antibody was incubated at 4 ° overnight. 2, Citrate buffer of pH6.0 was used for antigen retrieval. 3, Secondary antibody was diluted at 1:200 (room temperature, 30min).