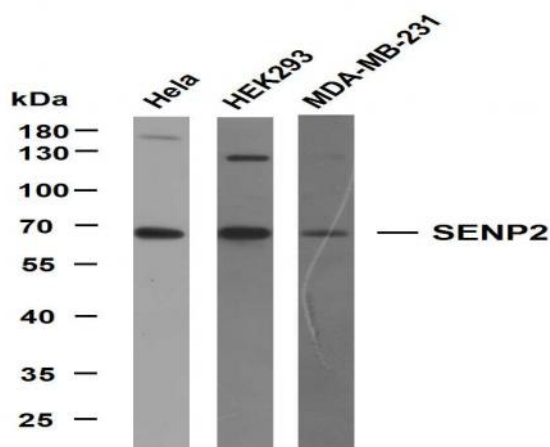


## SENP2 (PTR2320) mouse mAb

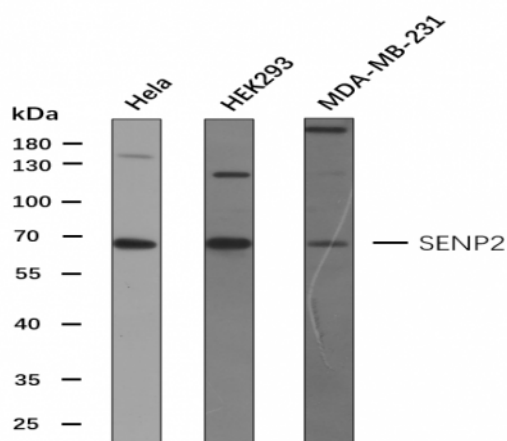
<b>Catalog No :</b>	YM4270
<b>Reactivity :</b>	Human;
<b>Applications :</b>	WB;IF;ELISA
<b>Target :</b>	SENP2
<b>Fields :</b>	>>Nucleocytoplasmic transport;>>Wnt signaling pathway
<b>Gene Name :</b>	SENP2 KIAA1331
<b>Protein Name :</b>	SENP2
<b>Human Gene Id :</b>	59343
<b>Human Swiss Prot No :</b>	Q9HC62
<b>Immunogen :</b>	Synthesized peptide derived from human SENP2 AA range: 430-526
<b>Specificity :</b>	This antibody detects endogenous levels of SENP2 protein.
<b>Formulation :</b>	PBS, 50% glycerol, 0.05% Proclin 300, 0.05%BSA
<b>Source :</b>	Mouse, Monoclonal/IgG1, kappa
<b>Dilution :</b>	WB 1:500-2000. IF 1:100-500. ELISA 1:1000-5000
<b>Purification :</b>	Protein G
<b>Storage Stability :</b>	-15°C to -25°C/1 year(Do not lower than -25°C)
<b>Molecularweight :</b>	68kD
<b>Observed Band :</b>	65kD
<b>Background :</b>	SUMO1 (UBL1; MIM 601912) is a small ubiquitin-like protein that can be

covalently conjugated to other proteins. SENP2 is one of a group of enzymes that process newly synthesized SUMO1 into the conjugatable form and catalyze the deconjugation of SUMO1-containing species.[supplied by OMIM, Apr 2004],

## Products Images



Various whole cell lysates were separated by 10% SDS-PAGE, and the membrane was blotted with anti-SENP2 (PTR2320) antibody. The HRP-conjugated Goat anti-Mouse IgG (H + L) antibody was used to detect the antibody. Lane 1: HeLa Lane 2: HEK293 Lane 3: MDA-MB-231



Various whole cell lysates (30 µg) were separated by 10% SDS-PAGE, and the membrane was blotted with SENP2 antibody at 1 µg/ml. The HRP-conjugated anti-Mouse IgG antibody (Cat:RS0001) was used to detect the antibody.