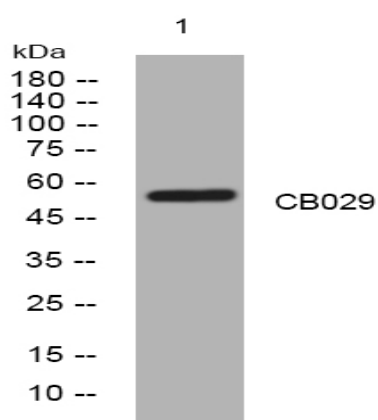


CB029 rabbit pAb

Catalog No :	YN3439
Reactivity :	Human;Mouse;Rat
Applications :	WB
Target :	CB029
Gene Name :	C2orf29 C40
Protein Name :	CB029
Human Gene Id :	55571
Human Swiss Prot No :	Q9UKZ1
Mouse Gene Id :	52846
Mouse Swiss Prot No :	Q9CWN7
Rat Gene Id :	363221
Rat Swiss Prot No :	B0BNA9
Immunogen :	Synthesized peptide derived from human CB029 AA range: 264-314
Specificity :	This antibody detects endogenous levels of CB029 at Human/Mouse/Rat
Formulation :	Liquid in PBS containing 50% glycerol, 0.5% BSA and 0.02% sodium azide.
Source :	Polyclonal, Rabbit,IgG
Dilution :	WB 1:500-2000
Purification :	The antibody was affinity-purified from rabbit antiserum by affinity-chromatography using epitope-specific immunogen.

Concentration : 1 mg/ml**Storage Stability :** -15°C to -25°C/1 year(Do not lower than -25°C)**Molecularweight :** 56kD**Subcellular Location :** Cytoplasm . Nucleus .

Products Images



Western blot analysis of lysates from HEK293 cells, primary antibody was diluted at 1:1000, 4° over night