

SUN5 Polyclonal Antibody

Catalog No :	YN3015
Reactivity :	Human;Mouse
Applications :	WB;ELISA
Target :	SUN5
Gene Name :	SUN5 SPAG4L TSARG4
Protein Name :	SUN domain-containing protein 5 (Sad1 and UNC84 domain-containing protein 5) (Sperm-associated antigen 4-like protein) (Testis and spermatogenesis-related gene 4 protein)
Human Gene Id :	140732
Human Swiss Prot No :	Q8TC36
Mouse Swiss Prot No :	Q9DA32
Immunogen :	Synthesized peptide derived from part region of human protein
Specificity :	SUN5 Polyclonal Antibody detects endogenous levels of protein.
Formulation :	Liquid in PBS containing 50% glycerol, and 0.02% sodium azide.
Source :	Polyclonal, Rabbit,IgG
Dilution :	WB 1:500-2000 ELISA 1:5000-20000
Purification :	The antibody was affinity-purified from rabbit antiserum by affinity-chromatography using epitope-specific immunogen.
Concentration :	1 mg/ml
Storage Stability :	-15°C to -25°C/1 year(Do not lower than -25°C)
Observed Band :	41kD

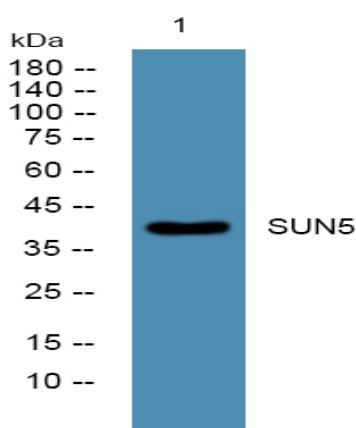
Background : similarity:Contains 1 Unc84 (SUN) domain.,tissue specificity:Widely expressed.,

Function : similarity:Contains 1 Unc84 (SUN) domain.,tissue specificity:Widely expressed.,

Subcellular Location : Nucleus inner membrane ; Single-pass membrane protein . Golgi apparatus . During spermiogenesis, traffics through the Golgi apparatus before reaching the round spermatid inner membrane of the nuclear envelope and later migrates to the coupling apparatus of the sperm during sperm head elongation and differentiation. In mature spermatozoa, is localized to the coupling apparatus of the sperm head and tail in the implementation fossa. .

Expression : Sperm (at protein level) (PubMed:27640305). Widely expressed (PubMed:12621555). Conflictingly shown to be specifically expressed in testis (PubMed:21711156).

Products Images



Western blot analysis of lysates from SW480 cells, primary antibody was diluted at 1:1000, 4° over night