

SIA8B Polyclonal Antibody

Catalog No :	YN2918
Reactivity :	Human;Mouse;Rat
Applications :	WB;ELISA
Target :	SIA8B
Gene Name :	ST8SIA2 SIAT8B STX
Protein Name :	Alpha-2,8-sialyltransferase 8B (EC 2.4.99.-) (Sialyltransferase 8B) (SIAT8-B) (Sialyltransferase X) (STX) (Sialyltransferase St8Sia II) (ST8SiaII)
Human Gene Id :	8128
Human Swiss Prot No :	Q92186
Mouse Swiss Prot No :	O35696
Rat Swiss Prot No :	Q07977
Immunogen :	Synthesized peptide derived from part region of human protein
Specificity :	SIA8B Polyclonal Antibody detects endogenous levels of protein.
Formulation :	Liquid in PBS containing 50% glycerol, and 0.02% sodium azide.
Source :	Polyclonal, Rabbit,IgG
Dilution :	WB 1:500-2000 ELISA 1:5000-20000
Purification :	The antibody was affinity-purified from rabbit antiserum by affinity-chromatography using epitope-specific immunogen.
Concentration :	1 mg/ml
Storage Stability :	-15°C to -25°C/1 year(Do not lower than -25°C)

Observed Band : 41kD

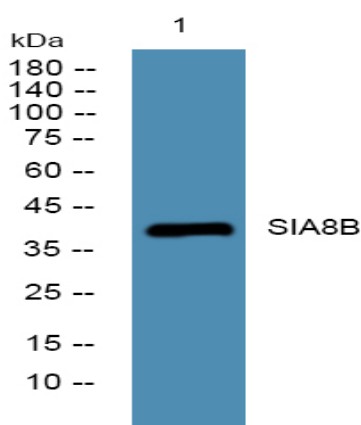
Background : The protein encoded by this gene is a type II membrane protein that is thought to catalyze the transfer of sialic acid from CMP-sialic acid to N-linked oligosaccharides and glycoproteins. The encoded protein may be found in the Golgi apparatus and may be involved in the production of polysialic acid, a modulator of the adhesive properties of neural cell adhesion molecule (NCAM1). This protein is a member of glycosyltransferase family 29. [provided by RefSeq, Jul 2008],

Function : function:May transfer sialic acid through alpha-2,8-linkages to the alpha-2,3-linked and alpha-2,6-linked sialic acid of N-linked oligosaccharides of glycoproteins and may be involved in PSA (polysialic acid) expression.,online information:GlycoGene database,online information:ST8Sia II,pathway:Protein modification; protein glycosylation.,similarity:Belongs to the glycosyltransferase 29 family.,tissue specificity:Highly expressed in fetal brain, kidney and heart and to a much lesser extent in adult heart and thymus.,

Subcellular Location : Golgi apparatus membrane ; Single-pass type II membrane protein .

Expression : Highly expressed in fetal brain, kidney and heart and to a much lesser extent in adult heart and thymus.

Products Images



Western blot analysis of lysates from SH-SY5Y cells, primary antibody was diluted at 1:1000, 4° over night