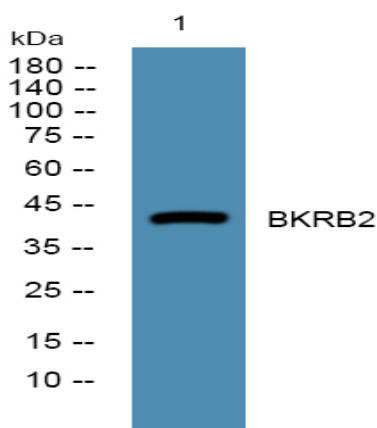


BKRB2 Polyclonal Antibody

Catalog No :	YN2508
Reactivity :	Human;Rat;Mouse;
Applications :	WB;ELISA
Target :	BKRB2
Fields :	>>Calcium signaling pathway;>>cGMP-PKG signaling pathway;>>Sphingolipid signaling pathway;>>Neuroactive ligand-receptor interaction;>>Complement and coagulation cascades;>>Inflammatory mediator regulation of TRP channels;>>Regulation of actin cytoskeleton;>>Endocrine and other factor-regulated calcium reabsorption;>>Chagas disease;>>Pathways in cancer
Gene Name :	BDKRB2 BKR2
Protein Name :	B2 bradykinin receptor (B2R) (BK-2 receptor)
Human Gene Id :	624
Human Swiss Prot No :	P30411
Mouse Swiss Prot No :	P32299
Rat Swiss Prot No :	P25023
Immunogen :	Synthesized peptide derived from human protein . at AA range: 140-220
Specificity :	BKRB2 Polyclonal Antibody detects endogenous levels of protein.
Formulation :	Liquid in PBS containing 50% glycerol, and 0.02% sodium azide.
Source :	Polyclonal, Rabbit,IgG
Dilution :	WB 1:500-2000 ELISA 1:5000-20000
Purification :	The antibody was affinity-purified from rabbit antiserum by affinity-chromatography using epitope-specific immunogen.

Concentration :	1 mg/ml
Storage Stability :	-15°C to -25°C/1 year(Do not lower than -25°C)
Observed Band :	43kD
Cell Pathway :	Calcium;Neuroactive ligand-receptor interaction;Complement and coagulation cascades;Regulates Actin and Cytoskeleton;
Background :	This gene encodes a receptor for bradykinin. The 9 aa bradykinin peptide elicits many responses including vasodilation, edema, smooth muscle spasm and pain fiber stimulation. This receptor associates with G proteins that stimulate a phosphatidylinositol-calcium second messenger system. Alternate start codons result in two isoforms of the protein. [provided by RefSeq, Jul 2008],
Function :	function:Receptor for bradykinin. It is associated with G proteins that activate a phosphatidylinositol-calcium second messenger system.,online information:Bradykinin receptor entry,similarity:Belongs to the G-protein coupled receptor 1 family.,tissue specificity:Ubiquitous. Widespread in normal smooth muscle tissue and neurons.,
Subcellular Location :	Cell membrane; Multi-pass membrane protein.
Expression :	Ubiquitous. Widespread in normal smooth muscle tissue and neurons.

Products Images



Western blot analysis of lysates from DU145 cells, primary antibody was diluted at 1:1000, 4° over night