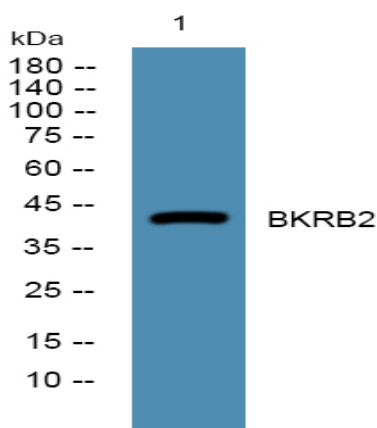


## BKRB2 Polyclonal Antibody

<b>Catalog No :</b>	YN2508
<b>Reactivity :</b>	Human;Rat;Mouse;
<b>Applications :</b>	WB;ELISA
<b>Target :</b>	BKRB2
<b>Fields :</b>	>>Calcium signaling pathway;>>cGMP-PKG signaling pathway;>>Sphingolipid signaling pathway;>>Neuroactive ligand-receptor interaction;>>Complement and coagulation cascades;>>Inflammatory mediator regulation of TRP channels;>>Regulation of actin cytoskeleton;>>Endocrine and other factor-regulated calcium reabsorption;>>Chagas disease;>>Pathways in cancer
<b>Gene Name :</b>	BDKRB2 BKR2
<b>Protein Name :</b>	B2 bradykinin receptor (B2R) (BK-2 receptor)
<b>Human Gene Id :</b>	624
<b>Human Swiss Prot No :</b>	P30411
<b>Mouse Swiss Prot No :</b>	P32299
<b>Rat Swiss Prot No :</b>	P25023
<b>Immunogen :</b>	Synthesized peptide derived from human protein . at AA range: 140-220
<b>Specificity :</b>	BKRB2 Polyclonal Antibody detects endogenous levels of protein.
<b>Formulation :</b>	Liquid in PBS containing 50% glycerol, and 0.02% sodium azide.
<b>Source :</b>	Polyclonal, Rabbit,IgG
<b>Dilution :</b>	WB 1:500-2000 ELISA 1:5000-20000
<b>Purification :</b>	The antibody was affinity-purified from rabbit antiserum by affinity-chromatography using epitope-specific immunogen.

<b>Concentration :</b>	1 mg/ml
<b>Storage Stability :</b>	-15°C to -25°C/1 year(Do not lower than -25°C)
<b>Observed Band :</b>	43kD
<b>Cell Pathway :</b>	Calcium;Neuroactive ligand-receptor interaction;Complement and coagulation cascades;Regulates Actin and Cytoskeleton;
<b>Background :</b>	This gene encodes a receptor for bradykinin. The 9 aa bradykinin peptide elicits many responses including vasodilation, edema, smooth muscle spasm and pain fiber stimulation. This receptor associates with G proteins that stimulate a phosphatidylinositol-calcium second messenger system. Alternate start codons result in two isoforms of the protein. [provided by RefSeq, Jul 2008],
<b>Function :</b>	function:Receptor for bradykinin. It is associated with G proteins that activate a phosphatidylinositol-calcium second messenger system.,online information:Bradykinin receptor entry,similarity:Belongs to the G-protein coupled receptor 1 family.,tissue specificity:Ubiquitous. Widespread in normal smooth muscle tissue and neurons.,
<b>Subcellular Location :</b>	Cell membrane; Multi-pass membrane protein.
<b>Expression :</b>	Ubiquitous. Widespread in normal smooth muscle tissue and neurons.

## Products Images



Western blot analysis of lysates from DU145 cells, primary antibody was diluted at 1:1000, 4° over night