

## ANXA5 Polyclonal Antibody

<b>Catalog No :</b>	YN2326
<b>Reactivity :</b>	Human;Mouse;Rat
<b>Applications :</b>	WB;ELISA
<b>Target :</b>	ANXA5
<b>Gene Name :</b>	ANXA5 ANX5 ENX2 PP4
<b>Protein Name :</b>	Annexin A5 (Anchoring CII) (Annexin V) (Annexin-5) (Calphobindin I) (CBP-I) (Endonexin II) (Lipocortin V) (Placental anticoagulant protein 4) (PP4) (Placental anticoagulant protein I) (PAP-I) (Thrombop
<b>Human Gene Id :</b>	308
<b>Human Swiss Prot No :</b>	P08758
<b>Mouse Swiss Prot No :</b>	P48036
<b>Rat Swiss Prot No :</b>	P14668
<b>Immunogen :</b>	Synthesized peptide derived from human protein . at AA range: 60-140
<b>Specificity :</b>	ANXA5 Polyclonal Antibody detects endogenous levels of protein.
<b>Formulation :</b>	Liquid in PBS containing 50% glycerol, and 0.02% sodium azide.
<b>Source :</b>	Polyclonal, Rabbit,IgG
<b>Dilution :</b>	WB 1:500-2000 ELISA 1:5000-20000
<b>Purification :</b>	The antibody was affinity-purified from rabbit antiserum by affinity-chromatography using epitope-specific immunogen.
<b>Concentration :</b>	1 mg/ml
<b>Storage Stability :</b>	-15°C to -25°C/1 year(Do not lower than -25°C)

**Observed Band :** 35kD

### Background :

The protein encoded by this gene belongs to the annexin family of calcium-dependent phospholipid binding proteins some of which have been implicated in membrane-related events along exocytotic and endocytotic pathways. Annexin 5 is a phospholipase A2 and protein kinase C inhibitory protein with calcium channel activity and a potential role in cellular signal transduction, inflammation, growth and differentiation. Annexin 5 has also been described as placental anticoagulant protein I, vascular anticoagulant-alpha, endonexin II, lipocortin V, placental protein 4 and anchorin CII. The gene spans 29 kb containing 13 exons, and encodes a single transcript of approximately 1.6 kb and a protein product with a molecular weight of about 35 kDa. [provided by RefSeq, Jul 2008],

### Function :

caution:The sequence shown here is derived from an Ensembl automatic analysis pipeline and should be considered as preliminary data.,caution:This protein has been independently sequenced by at least seven groups under different names.,domain:A pair of annexin repeats may form one binding site for calcium and phospholipid.,function:This protein is an anticoagulant protein that acts as an indirect inhibitor of the thromboplastin-specific complex, which is involved in the blood coagulation cascade.,similarity:Belongs to the annexin family.,similarity:Contains 4 annexin repeats.,subunit:Monomer. Binds ATRX and EIF5B.,

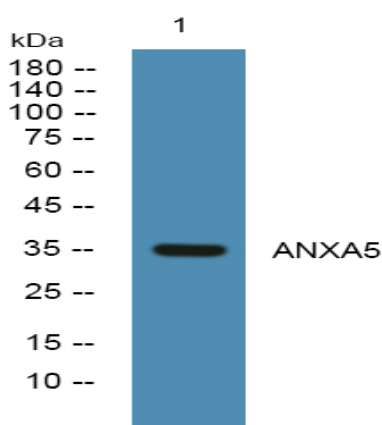
### Subcellular Location :

intracellular,cytoplasm,focal adhesion,external side of plasma membrane,membrane,extracellular exosome,endothelial microparticle,

### Expression :

Adipocyte,Epithelium,Lung,Melanoma,Muscle,Ovary,Placenta,Skin,

## Products Images



Western blot analysis of lysates from HCT116 cells, primary antibody was diluted at 1:1000, 4° over night