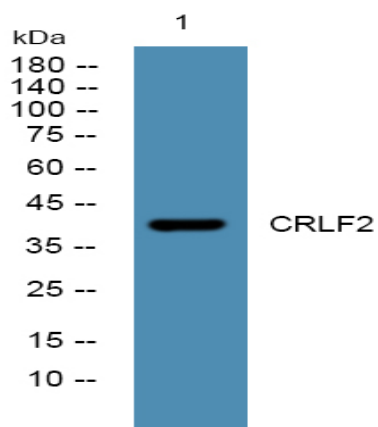


CRLF2 Polyclonal Antibody

Catalog No :	YN2160
Reactivity :	Human;Rat;Mouse
Applications :	WB;ELISA
Target :	CRLF2
Fields :	>>Cytokine-cytokine receptor interaction;>>JAK-STAT signaling pathway
Gene Name :	CRLF2 CRL2 ILXR TSLPR
Protein Name :	Cytokine receptor-like factor 2 (Cytokine receptor-like 2) (IL-XR) (Thymic stromal lymphopoietin protein receptor) (TSLP receptor)
Human Gene Id :	64109
Human Swiss Prot No :	Q9HC73
Mouse Swiss Prot No :	Q8CII9
Rat Swiss Prot No :	Q8R4S8
Immunogen :	Synthesized peptide derived from part region of human protein
Specificity :	CRLF2 Polyclonal Antibody detects endogenous levels of protein.
Formulation :	Liquid in PBS containing 50% glycerol, and 0.02% sodium azide.
Source :	Polyclonal, Rabbit,IgG
Dilution :	WB 1:500-2000 ELISA 1:5000-20000
Purification :	The antibody was affinity-purified from rabbit antiserum by affinity-chromatography using epitope-specific immunogen.
Concentration :	1 mg/ml

Storage Stability :	-15 °C to -25 °C/1 year(Do not lower than -25 °C)
Observed Band :	40kD
Cell Pathway :	Cytokine-cytokine receptor interaction;Jak_STAT;
Background :	<p>This gene encodes a member of the type I cytokine receptor family. The encoded protein is a receptor for thymic stromal lymphopoietin (TSLP). Together with the interleukin 7 receptor (IL7R), the encoded protein and TSLP activate STAT3, STAT5, and JAK2 pathways, which control processes such as cell proliferation and development of the hematopoietic system. Rearrangement of this gene with immunoglobulin heavy chain gene (IGH) on chromosome 14, or with P2Y purinoceptor 8 gene (P2RY8) on the same X or Y chromosomes is associated with B-progenitor acute lymphoblastic leukemia (ALL) and Down syndrome ALL. Alternatively spliced transcript variants have been found for this gene. [provided by RefSeq, Sep 2014],</p>
Function :	<p>domain:The box 1 motif is important for association with JAKs.,domain:The WSXWS motif appears to be necessary for proper protein folding and thereby efficient intracellular transport and cell-surface receptor binding.,function:Receptor for thymic stromal lymphopoietin (TSLP). Forms a functional complex with TSLP and IL7R which is capable of stimulating cell proliferation through activation of STAT3 and STAT5. Also activates JAK2 (By similarity). Implicated in the development of the hematopoietic system.,induction:Up-regulated in activated peripheral monocytes and THP-1 cells.,miscellaneous:The gene encoding for this protein is located in the pseudoautosomal region 1 (PAR1) of X and Y chromosomes.,similarity:Belongs to the type I cytokine receptor family. Type 5 subfamily.,similarity:Contains 1 fibronectin type-III domain.,subunit:Heterodimer of CRLF2 and IL7R.,tissue specificity:Expresse</p>
Subcellular Location :	[Isoform 1]: Cell membrane ; Single-pass type I membrane protein .; [Isoform 2]: Secreted .
Expression :	Expressed in heart, skeletal muscle, kidney and adult and fetal liver. Primarily expressed in dendrites and monocytes. Weakly expressed in T-cells.

Products Images



Western blot analysis of lysates from PC12 cells, primary antibody was diluted at 1:1000, 4° over night