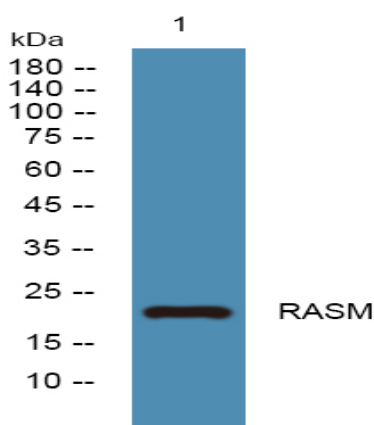


RASM Polyclonal Antibody

Catalog No :	YN2100
Reactivity :	Human;Rat;Mouse
Applications :	WB;ELISA
Target :	RASM
Fields :	>>MAPK signaling pathway;>>Ras signaling pathway;>>Rap1 signaling pathway;>>Phospholipase D signaling pathway;>>Mitophagy - animal;>>Autophagy - animal;>>Cellular senescence;>>Apelin signaling pathway;>>C-type lectin receptor signaling pathway;>>Regulation of actin cytoskeleton;>>Proteoglycans in cancer
Gene Name :	MRAS RRAS3
Protein Name :	Ras-related protein M-Ras (Ras-related protein R-Ras3)
Human Gene Id :	22808
Human Swiss Prot No :	O14807
Mouse Swiss Prot No :	O08989
Rat Swiss Prot No :	P97538
Immunogen :	Synthesized peptide derived from part region of human protein
Specificity :	RASM Polyclonal Antibody detects endogenous levels of protein.
Formulation :	Liquid in PBS containing 50% glycerol, and 0.02% sodium azide.
Source :	Polyclonal, Rabbit,IgG
Dilution :	WB 1:500-2000 ELISA 1:5000-20000
Purification :	The antibody was affinity-purified from rabbit antiserum by affinity-chromatography using epitope-specific immunogen.

Concentration :	1 mg/ml
Storage Stability :	-15°C to -25°C/1 year(Do not lower than -25°C)
Observed Band :	22kD
Cell Pathway :	MAPK_ERK_Growth;MAPK_G_Protein;Tight junction;Regulates Actin and Cytoskeleton;
Background :	This gene encodes a member of the Ras family of small GTPases. These membrane-associated proteins function as signal transducers in multiple processes including cell growth and differentiation, and dysregulation of Ras signaling has been associated with many types of cancer. The encoded protein may play a role in the tumor necrosis factor-alpha and MAP kinase signaling pathways. Alternatively spliced transcript variants encoding multiple isoforms have been observed for this gene. [provided by RefSeq, Nov 2011],
Function :	function:May serve as an important signal transducer for a novel upstream stimuli in controlling cell proliferation. Weakly activates the MAP kinase pathway.,induction:By interleukin-9, but not by IL-2 or IL-4.,similarity:Belongs to the small GTPase superfamily. Ras family.,subunit:Interacts with RGL3.,tissue specificity:Expression highly restricted to the brain and heart.,
Subcellular Location :	Cell membrane ; Lipid-anchor ; Cytoplasmic side .
Expression :	Expression highly restricted to the brain and heart.

Products Images



Western blot analysis of lysates from Jurkat cells, primary antibody was diluted at 1:1000, 4° over night