

CEA (carcinoembryonic antigen) (PT0031R) rabbit mAb

Catalog No :	YM7245
Reactivity :	Human;
Applications :	IHC;ELISA
Target :	CEA
Gene Name :	CEACAM5
Protein Name :	Carcinoembryonic antigen-related cell adhesion molecule 5
Human Gene Id :	1048
Human Swiss Prot No :	P06731
Mouse Swiss Prot No :	Q3UKK2
Immunogen :	Recombinant protein. AA range:35-314
Specificity :	endogenous
Formulation :	PBS, 50% glycerol, 0.05% Proclin 300, 0.05%BSA
Source :	Monoclonal Rabbit IgG1, Kappa
Dilution :	IHC 1:100-500 ELISA: 1:20000
Purification :	Protein A
Storage Stability :	-15°C to -25°C/1 year(Do not lower than -25°C)
Background :	<p>This gene encodes a cell surface glycoprotein that represents the founding member of the carcinoembryonic antigen (CEA) family of proteins. The encoded protein is used as a clinical biomarker for gastrointestinal cancers and may promote tumor development through its role as a cell adhesion molecule. Additionally, the encoded protein may regulate differentiation, apoptosis, and cell polarity. This gene is present in a CEA family gene cluster on chromosome 19.</p>

Alternative splicing results in multiple transcript variants. [provided by RefSeq, Jul 2015],

Function :

function:Cell surface glycoprotein that plays a role in cell adhesion and in intracellular signaling. Receptor for E.coli Dr adhesins.,PTM:Complex immunoreactive glycoprotein with a MW of 180 kDa comprising 60% carbohydrate.,similarity:Belongs to the immunoglobulin superfamily. CEA family.,similarity:Contains 7 Ig-like (immunoglobulin-like) domains.,subunit:Homodimer. Binding of E.coli Dr adhesins leads to dissociation of the homodimer.,tissue specificity:Found in adenocarcinomas of endodermally derived digestive system epithelium and fetal colon.,

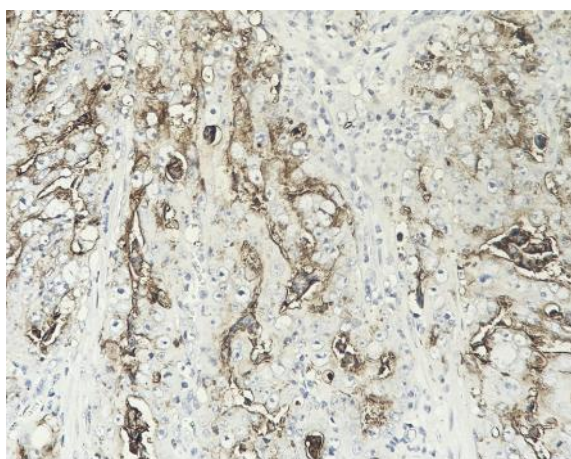
Subcellular Location :

Cytoplasmic, Membranous

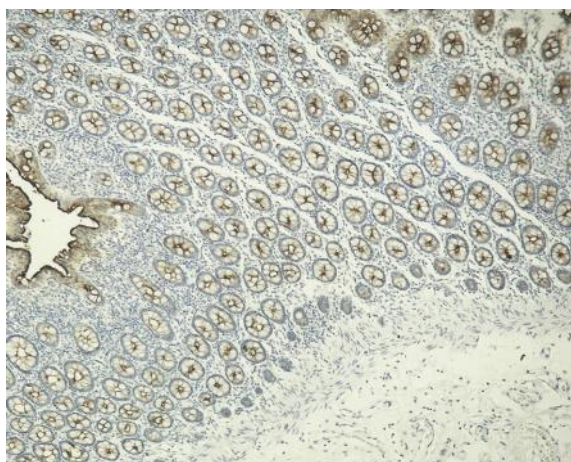
Expression :

Expressed in columnar epithelial and goblet cells of the colon (at protein level) (PubMed:10436421). Found in adenocarcinomas of endodermally derived digestive system epithelium and fetal colon.

Products Images



Human colon carcinoma tissue was stained with Anti-CEA (PT0031R) rabbit Antibody



Human colon tissue was stained with Anti-CEA (PT0031R) rabbit Antibody