

ATG5 (PT0514R) PT® Rabbit mAb

Catalog No :	YM8340
Reactivity :	Human; Mouse; Rat;
Applications :	WB;IHC;IF;IP;ELISA
Target :	ATG5
Fields :	>>Autophagy - other;>>Mitophagy - animal;>>Autophagy - animal;>>Longevity regulating pathway;>>Longevity regulating pathway - multiple species;>>Ferroptosis;>>NOD-like receptor signaling pathway;>>RIG-I-like receptor signaling pathway;>>Shigellosis
Gene Name :	ATG5 APG5L ASP
Protein Name :	ATG5
Human Gene Id :	9474
Human Swiss Prot No :	Q9H1Y0
Mouse Gene Id :	11793
Mouse Swiss Prot No :	Q99J83
Rat Swiss Prot No :	Q3MQ06
Specificity :	endogenous
Formulation :	PBS, 50% glycerol, 0.05% Proclin 300, 0.05%BSA
Source :	Monoclonal, rabbit, IgG, Kappa
Dilution :	IHC 1:200-1:1000;WB 1:2000-1:10000;IF 1:200-1:1000;ELISA 1:5000-1:20000;IP 1:50-1:200;
Purification :	Protein A

Storage Stability : -15°C to -25°C/1 year (Do not lower than -25°C)

Molecularweight : 33kD

Observed Band : 55kD

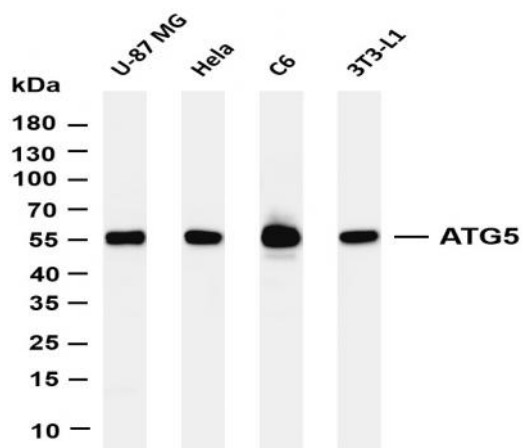
Background : The protein encoded by this gene, in combination with autophagy protein 12, functions as an E1-like activating enzyme in a ubiquitin-like conjugating system. The encoded protein is involved in several cellular processes, including autophagic vesicle formation, mitochondrial quality control after oxidative damage, negative regulation of the innate antiviral immune response, lymphocyte development and proliferation, MHC II antigen presentation, adipocyte differentiation, and apoptosis. Several transcript variants encoding different protein isoforms have been found for this gene. [provided by RefSeq, Sep 2015],

Function : function:May play an important role in the apoptotic process, possibly within the modified cytoskeleton. Its expression is a relatively late event in the apoptotic process, occurring downstream of caspase activity.,function:Required for autophagy. Conjugates to ATG12 and associates with isolation membrane to form cup-shaped isolation membrane and autophagosome. The conjugate detaches from the membrane immediately before or after autophagosome formation is completed.,induction:By apoptotic stimuli.,PTM:Conjugated to ATG12; which is essential for autophagy, but is not required for association with isolation membrane.,similarity:Belongs to the ATG5 family.,subcellular location:Colocalizes with nonmuscle actin.,tissue specificity:Ubiquitous. The mRNA is present at similar levels in viable and apoptotic cells, whereas the protein is dramatically highly expressed in apoptotic cells.,

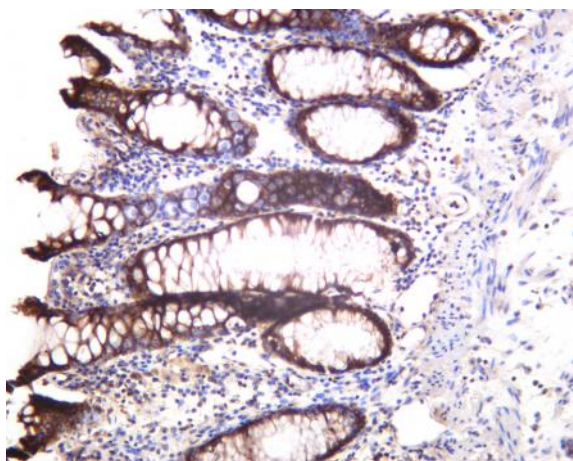
Subcellular Location : Cytoplasm

Expression : Ubiquitous. The mRNA is present at similar levels in viable and apoptotic cells, whereas the protein is dramatically highly expressed in apoptotic cells.

Products Images



Various whole cell lysates were separated by 4-20% SDS-PAGE, and the membrane was blotted with anti-ATG5 (PT0514R) antibody. The HRP-conjugated Goat anti-Rabbit IgG(H + L) antibody was used to detect the antibody. Lane 1: U-87 MG Lane 2: HeLa Lane 3: C6 Lane 4: 3T3-L1 Predicted band size: 33kDa Observed band size: 55kDa



Human colon was stained with anti-ATG5 (PT0514R) rabbit antibody