

NRBP Polyclonal Antibody

Catalog No :	YN1891
Reactivity :	Human;Mouse
Applications :	WB;ELISA
Target :	NRBP
Gene Name :	NRBP1 BCON3 NRBP
Protein Name :	Nuclear receptor-binding protein
Human Gene Id :	29959
Human Swiss Prot No :	Q9UHY1
Mouse Swiss Prot No :	Q99J45
Immunogen :	Synthesized peptide derived from part region of human protein
Specificity :	NRBP Polyclonal Antibody detects endogenous levels of protein.
Formulation :	Liquid in PBS containing 50% glycerol, and 0.02% sodium azide.
Source :	Polyclonal, Rabbit,IgG
Dilution :	WB 1:500-2000 ELISA 1:5000-20000
Purification :	The antibody was affinity-purified from rabbit antiserum by affinity-chromatography using epitope-specific immunogen.
Concentration :	1 mg/ml
Storage Stability :	-15°C to -25°C/1 year(Do not lower than -25°C)
Observed Band :	58kD

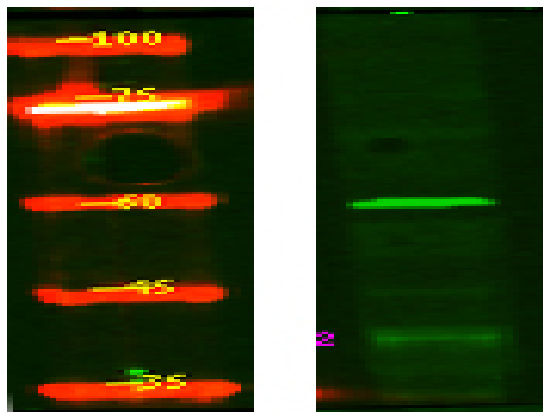
Background : caution:Author states that kinase activity observed in PubMed:11956649 may be due to sample contamination. This protein is predicted to be catalytically inactive.,domain:The protein kinase domain is predicted to be catalytically inactive.,function:May play a role in subcellular trafficking between the endoplasmic reticulum and Golgi apparatus through interactions with the Rho-type GTPases. Binding to the NS3 protein of dengue virus type 2 appears to subvert this activity into the alteration of the intracellular membrane structure associated with flaviviral replication.,similarity:Belongs to the protein kinase superfamily. Ser/Thr protein kinase family.,similarity:Contains 1 protein kinase domain.,subcellular location:Colocalizes with activated RAC3 to endomembranes and at the cell periphery in lamellipodia.,subunit:Homodimer. Binds to MLF1, recruiting a serine kinase which phosphorylates both itself and MLF1. Phosphorylated MLF1 binds to YWHAZ and is retained in the cytoplasm.,tissue specificity:Ubiquitously expressed in all tissues examined with high levels in the testis.,

Function : caution:Author states that kinase activity observed in PubMed:11956649 may be due to sample contamination. This protein is predicted to be catalytically inactive.,domain:The protein kinase domain is predicted to be catalytically inactive.,function:May play a role in subcellular trafficking between the endoplasmic reticulum and Golgi apparatus through interactions with the Rho-type GTPases. Binding to the NS3 protein of dengue virus type 2 appears to subvert this activity into the alteration of the intracellular membrane structure associated with flaviviral replication.,similarity:Belongs to the protein kinase superfamily. Ser/Thr protein kinase family.,similarity:Contains 1 protein kinase domain.,subcellular location:Colocalizes with activated RAC3 to endomembranes and at the cell periphery in lamellipodia.,subunit:Homodimer. Binds to MLF1, recruiting a serine kinase which phosphorylates

Subcellular Location : Cytoplasm, cell cortex . Endomembrane system . Cell projection, lamellipodium . Colocalizes with activated RAC3 to endomembranes and at the cell periphery in lamellipodia.

Expression : Ubiquitously expressed in all tissues examined with high levels in the testis.

Products Images



Western Blot analysis of HEK293 lysis, using primary antibody at 1:1000 dilution. Secondary antibody(catalog#:RS23920) was diluted at 1:10000