

PAP (ABT66R) rabbit mAb

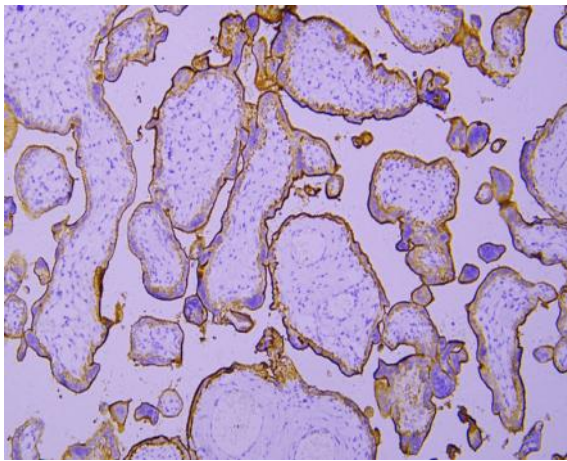
Catalog No :	YM7273
Reactivity :	Human;(predicted: Mouse;Rat)
Applications :	IHC; ELISA
Target :	PSAP
Gene Name :	ACP3
Protein Name :	Prostatic Acid Phosphatase(PSAP)
Human Gene Id :	3662
Human Swiss Prot No :	P15309
Immunogen :	Synthesized peptide derived from human Prostatic Acid Phosphatase(PSAP) AA range:201-300
Specificity :	This antibody detects endogenous levels of PSAP
Formulation :	PBS, 50% glycerol, 0.05% Proclin 300, 0.05%BSA
Source :	Monoclonal, Rabbit IgG1, Kappa
Dilution :	IHC 1:100-500, ELISA 1:5000-20000
Purification :	Recombinant Expression and Affinity purified
Storage Stability :	-15°C to -25°C/1 year(Do not lower than -25°C)
Function :	catalytic activity:A phosphate monoester + H(2)O = an alcohol + phosphate.,similarity:Belongs to the histidine acid phosphatase family.,subcellular location:Predominantly localized in the plasma membrane but also detected in intracellular vesicles.,subunit:Homodimer.,
Subcellular Location :	[Isoform 1]: Secreted .; [Isoform 2]: Cell membrane ; Single-pass type I membrane protein . Lysosome membrane ; Single-pass type I membrane protein .

Nucleus . Cytoplasm, cytosol . Appears to shuttle between the cell membrane and intracellular vesicles. Colocalizes with FLOT1 at cell membrane and in intracellular vesicles (PubMed:17638863). Colocalizes with LAMP2 on the lysosome membrane (PubMed:17897319). .

Expression :

Highly expressed in the prostate, restricted to glandular and ductal epithelial cells. Also expressed in bladder, kidney, pancreas, lung, cervix, testis and ovary. Weak expression in a subset of pancreatic islet cells, squamous epithelia, the pilosebaceous unit, colonic neuroendocrine cells and skin adnexal structures. Low expression in prostate carcinoma cells and tissues. ; [Isoform 2]: Widely expressed. Expressed in the sarcolemma of skeletal muscle.

Products Images



Immunohistochemical analysis of paraffin-embedded human Placenta. 1, Antibody was incubated at 4° overnight. 2, TRIS-EDTA of pH8.0 was used for antigen retrieval. 3, Secondary antibody was diluted at 1:200(room temperature, 30min).