

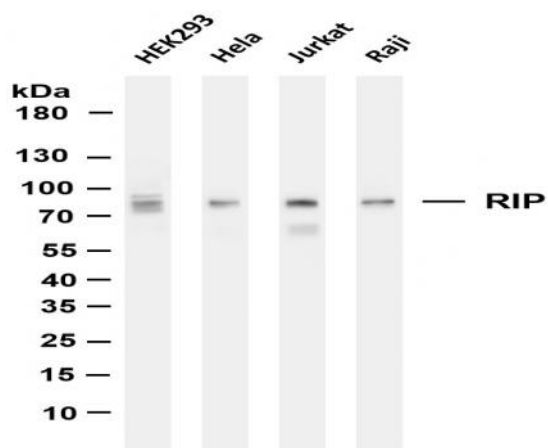
**RIP (PT0147R) PT® Rabbit mAb**

|                              |  |
|------------------------------|--|
| <b>Catalog No :</b>          | YM8084   |
| <b>Reactivity :</b>          | Human;   |
| <b>Applications :</b>        | WB;IHC;IF;IP;ELISA   |
| <b>Target :</b>              | RIPK1  |
| <b>Fields :</b>              | >>NF-kappa B signaling pathway;>>Apoptosis;>>Necroptosis;>>Toll-like receptor signaling pathway;>>NOD-like receptor signaling pathway;>>RIG-I-like receptor signaling pathway;>>Cytosolic DNA-sensing pathway;>>TNF signaling pathway;>>Alcoholic liver disease;>>Pathogenic Escherichia coli infection;>>Shigellosis;>>Salmonella infection;>>Hepatitis C;>>Human cytomegalovirus infection;>>Epstein-Barr virus infection;>>Human immunodeficiency virus 1 infection |
| <b>Gene Name :</b>           | RIPK1 RIP RIP1   |
| <b>Protein Name :</b>        | Receptor-interacting serine/threonine-protein kinase 1 (EC 2.7.11.1) (Cell death protein RIP) (Receptor-interacting protein 1) (RIP-1) (Serine/threonine-protein kinase RIP)   |
| <b>Human Gene Id :</b>       | 8737   |
| <b>Human Swiss Prot No :</b> | Q13546   |
| <b>Mouse Swiss Prot No :</b> | Q60855   |
| <b>Specificity :</b>         | endogenous   |
| <b>Formulation :</b>         | PBS, 50% glycerol, 0.05% Proclin 300, 0.05%BSA   |
| <b>Source :</b>              | Monoclonal, rabbit, IgG, Kappa   |
| <b>Dilution :</b>            | IHC 1:200-1000,WB 1:1000-5000,IF 1:200-1000,ELISA 1:5000-20000,IP 1:50-200   |
| <b>Purification :</b>        | Protein A  |

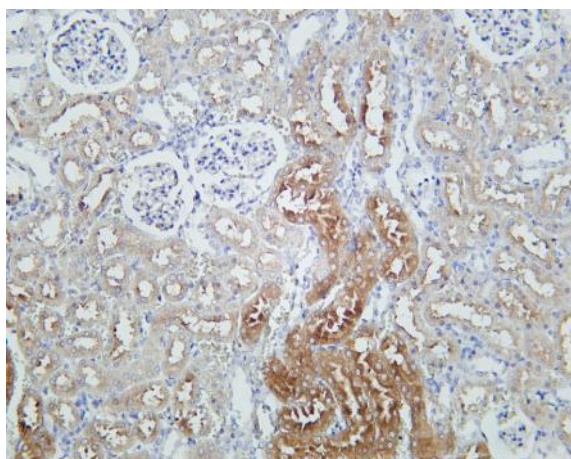
---

|                                   |  |
|-----------------------------------|--|
| <b>Storage Stability :</b>        | <u>-15°C to -25°C/1 year(Do not lower than -25°C)</u>  |
| <b>Molecularweight :</b>          | <u>76kD</u>  |
| <b>Observed Band :</b>            | <u>76kD</u>  |
| <b>Cell Pathway :</b>             | <u>Apoptosis_Inhibition;Apoptosis_Mitochondrial;Apoptosis_Overview;Toll_Like;RI<br/>G-I-like receptor;Cytosolic DNA-sensing pathway;</u>   |
| <b>Background :</b>               | <u>catalytic activity:ATP + a protein = ADP + a phosphoprotein.,function:Promotes<br/>apoptosis and activation of NF-kappa-B. Required for TNFRSF1A mediated<br/>activation of NF-kappa-B.,PTM:Autophosphorylated on serine and threonine<br/>residues.,PTM:Proteolytically cleaved by caspase-8 during TNF-induced<br/>apoptosis. Cleavage abolishes NF-kappa-B activation and enhances pro-apototic<br/>signaling through the TRADD-FADD interaction.,similarity:Belongs to the protein<br/>kinase superfamily. TKL Ser/Thr protein kinase family.,similarity:Contains 1 death<br/>domain.,similarity:Contains 1 protein kinase domain.,subunit:Binds to the death<br/>domain of TNFRSF6 and TRADD. Is recruited by TRADD to TNFRSF1A in a<br/>TNF-dependent process. Binds RIPK3, UBCE7IP1 isoform 3 (ZIN), EGFR,<br/>IKBKG, TRAF1, TRAF2 and TRAF3. Interacts with BNLF1. Interacts with<br/>SQSTM1 upon TNF-alpha stimulation. May interacts with MAVS/IPS1.,</u> |
| <b>Function :</b>                 | <u>catalytic activity:ATP + a protein = ADP + a phosphoprotein.,function:Promotes<br/>apoptosis and activation of NF-kappa-B. Required for TNFRSF1A mediated<br/>activation of NF-kappa-B.,PTM:Autophosphorylated on serine and threonine<br/>residues.,PTM:Proteolytically cleaved by caspase-8 during TNF-induced<br/>apoptosis. Cleavage abolishes NF-kappa-B activation and enhances pro-apototic<br/>signaling through the TRADD-FADD interaction.,similarity:Belongs to the protein<br/>kinase superfamily. TKL Ser/Thr protein kinase family.,similarity:Contains 1 death<br/>domain.,similarity:Contains 1 protein kinase domain.,subunit:Binds to the death<br/>domain of TNFRSF6 and TRADD. Is recruited by TRADD to TNFRSF1A in a<br/>TNF-dependent process. Binds RIPK3, UBCE7IP1 isoform 3 (ZIN), EGFR,<br/>IKBKG, TRAF1, TRAF2 and TRAF3. Interacts with BNLF1. Interacts with<br/>SQSTM1 upon TNF-alpha stimulation. May interacts with MAVS/IPS1.,</u> |
| <b>Subcellular<br/>Location :</b> | <u>Cytoplasmic, Membranous</u>   |
| <b>Expression :</b>               | <u>Leukemic T-cell,T-cell,Umbilical vein endothelial cell,</u>   |

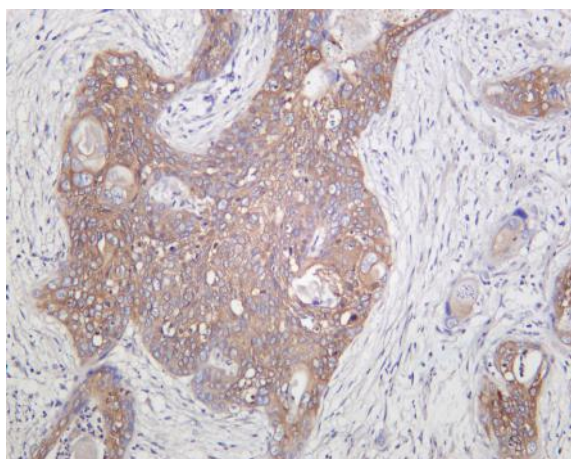
## Products Images



Various whole cell lysates were separated by 4-20% SDS-PAGE, and the membrane was blotted with anti-RIP(PT0147R) antibody. The HRP-conjugated Goat anti-Rabbit IgG(H + L) antibody was used to detect the antibody. Lane 1: HEK293 Lane 2: HeLa Lane 3: Jurkat Lane 4: Raji Predicted band size: 76kDa Observed band size: 76kDa



Rat kidney was stained with Anti-RIP (PT0147R) rabbit antibody



Human cervical carcinoma was stained with Anti-RIP (PT0147R) rabbit antibody