

EEA1 (PT0188R) PT® Rabbit mAb

Catalog No :	YM8117
Reactivity :	Human; Mouse; Rat;
Applications :	WB;IHC;IF;IP;ELISA
Target :	EEA1
Fields :	>>Endocytosis;>>Phagosome;>>Tuberculosis
Gene Name :	EEA1
Protein Name :	Early endosome antigen 1
Human Gene Id :	8411
Human Swiss Prot No :	Q15075
Mouse Gene Id :	216238
Mouse Swiss Prot No :	Q8BL66
Specificity :	endogenous
Formulation :	PBS, 50% glycerol, 0.05% Proclin 300, 0.05%BSA
Source :	Monoclonal, rabbit, IgG, Kappa
Dilution :	IHC 1:100-200,WB 1:1000-5000,IF 1:200-1000,ELISA 1:5000-20000,IP 1:50-200
Purification :	Protein A
Storage Stability :	-15°C to -25°C/1 year(Do not lower than -25°C)
Molecularweight :	162kD

Observed Band : 162kD

Cell Pathway : Endocytosis;

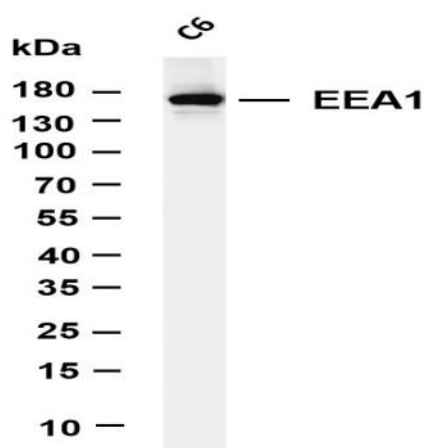
Background : disease:Antibodies against EEA1 are found in sera from patients with subacute cutaneous lupus erythematosus and other autoimmune diseases.,domain:The FYVE-type zinc finger domain mediates interactions with phosphatidylinositol 3-phosphate.,function:Binds phospholipid vesicles containing phosphatidylinositol 3-phosphate and participates in endosomal trafficking.,similarity:Contains 1 C2H2-type zinc finger.,similarity:Contains 1 FYVE-type zinc finger.,subunit:Homodimer. Binds STX6. Binds RAB5A, RAB5B, RAB5C and RAB22A that have been activated by GTP-binding.,

Function : disease:Antibodies against EEA1 are found in sera from patients with subacute cutaneous lupus erythematosus and other autoimmune diseases.,domain:The FYVE-type zinc finger domain mediates interactions with phosphatidylinositol 3-phosphate.,function:Binds phospholipid vesicles containing phosphatidylinositol 3-phosphate and participates in endosomal trafficking.,similarity:Contains 1 C2H2-type zinc finger.,similarity:Contains 1 FYVE-type zinc finger.,subunit:Homodimer. Binds STX6. Binds RAB5A, RAB5B, RAB5C and RAB22A that have been activated by GTP-binding.,

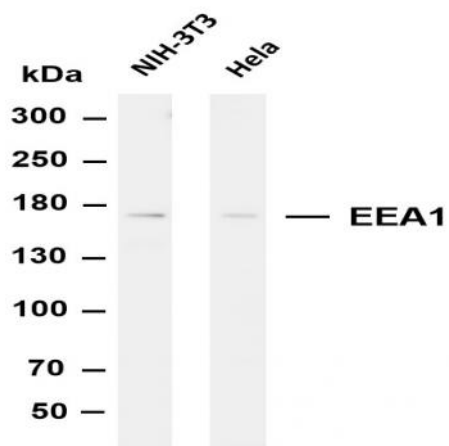
Subcellular Location : Cytoplasm

Expression : Aorta,Cervix carcinoma,Fetal brain cortex,Skeletal muscle,

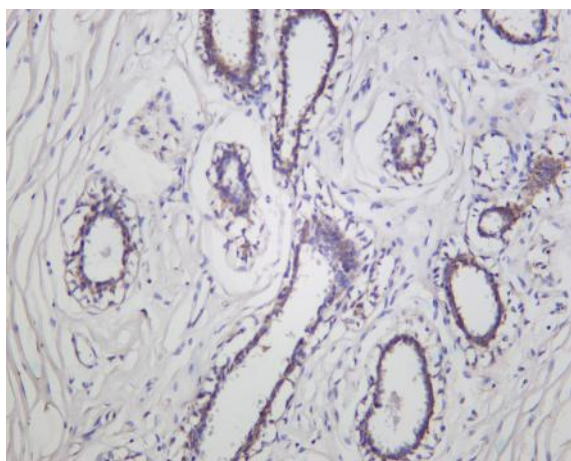
Products Images



Various whole cell lysates were separated by 4-20% SDS-PAGE, and the membrane was blotted with anti-EEA1 (PT0188R) antibody. The HRP-conjugated Goat anti-Rabbit IgG(H + L) antibody was used to detect the antibody. Lane 1: C6 Predicted band size: 162kDa Observed band size: 162kDa



Various whole cell lysates were separated by 4-8% SDS-PAGE, and the membrane was blotted with anti-EEA1 (PT0188R) antibody. The HRP-conjugated Goat anti-Rabbit IgG(H + L) antibody was used to detect the antibody. Lane 1: NIH-3T3 Lane 2: HeLa Predicted band size: 162kDa Observed band size: 162kDa



Human ductal breast carcinoma was stained with Anti-EEA1 (PT0188R) rabbit antibody