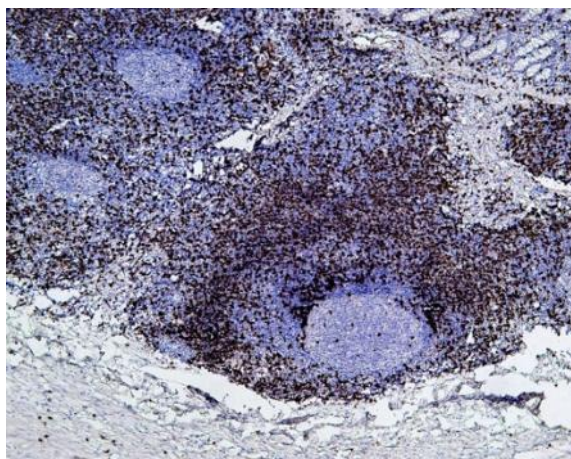


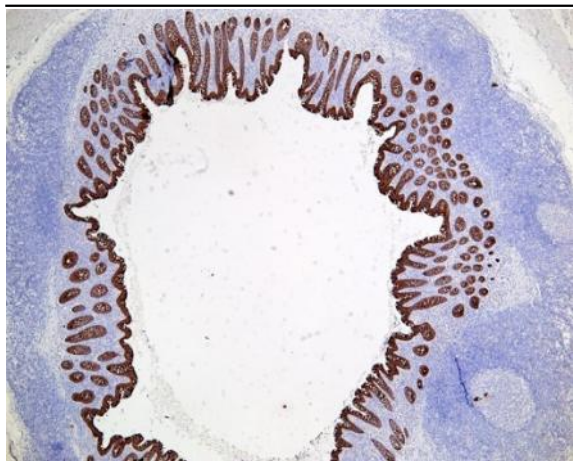
## Polymer HRP Goat Anti Mouse/Rabbit IgG(H+L)-S

|                            |  |
|----------------------------|--|
| <b>Catalog No :</b>        | RS0011   |
| <b>Reactivity :</b>        | Mouse Rabbit   |
| <b>Applications :</b>      | IHC;mlHC   |
| <b>Target :</b>            | Rabbit/Mouse IgG   |
| <b>Specificity :</b>       | This antibody detects Mouse or Rabbit IgG antibodies with labled HRP |
| <b>Source :</b>            | Goat   |
| <b>Dilution :</b>          | Ready to Use   |
| <b>Storage Stability :</b> | 2-8°C  |

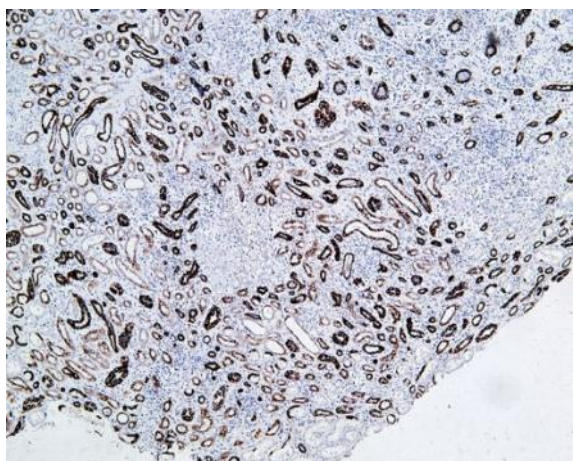
## Products Images



Human appendix tissue was stained with anti-CD8(ABT155) (YM6846) primary antibody and detected by the Polymer HRP Goat Anti Mouse/Rabbit IgG(H+L)-S.



Human appendix tissue was stained with anti-CK-Pan(ABT154) (YM6815) primary antibody and detected by the Polymer HRP Goat Anti Mouse/Rabbit IgG(H+L)-S.



Human kidney tissue was stained with anti-CK7(ABT-CK7) (YM6169) primary antibody and detected by the Polymer HRP Goat Anti Mouse/Rabbit IgG(H+L)-S.