

## ARHG4 Polyclonal Antibody

<b>Catalog No :</b>	YN1223
<b>Reactivity :</b>	Human;Mouse
<b>Applications :</b>	WB;ELISA
<b>Target :</b>	ARHG4
<b>Fields :</b>	>>Regulation of actin cytoskeleton
<b>Gene Name :</b>	ARHGEF4 KIAA1112
<b>Protein Name :</b>	Rho guanine nucleotide exchange factor 4 (APC-stimulated guanine nucleotide exchange factor 1) (Asef) (Asef1)
<b>Human Gene Id :</b>	50649
<b>Human Swiss Prot No :</b>	Q9NR80
<b>Mouse Swiss Prot No :</b>	Q7TNR9
<b>Immunogen :</b>	Synthesized peptide derived from human protein . at AA range: 270-350
<b>Specificity :</b>	ARHG4 Polyclonal Antibody detects endogenous levels of protein.
<b>Formulation :</b>	Liquid in PBS containing 50% glycerol, and 0.02% sodium azide.
<b>Source :</b>	Polyclonal, Rabbit,IgG
<b>Dilution :</b>	WB 1:500-2000 ELISA 1:5000-20000
<b>Purification :</b>	The antibody was affinity-purified from rabbit antiserum by affinity-chromatography using epitope-specific immunogen.
<b>Concentration :</b>	1 mg/ml
<b>Storage Stability :</b>	-15°C to -25°C/1 year(Do not lower than -25°C)

**Observed Band :** 75kD

**Cell Pathway :** Regulates Actin and Cytoskeleton;

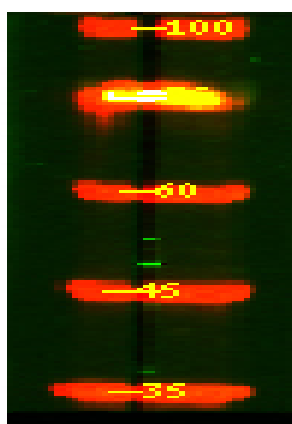
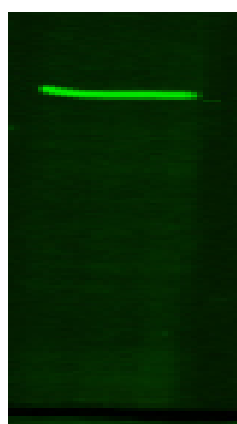
**Background :** Rho GTPases play a fundamental role in numerous cellular processes that are initiated by extracellular stimuli that work through G protein coupled receptors. The protein encoded by this gene may form complex with G proteins and stimulate Rho-dependent signals. Multiple alternatively spliced transcript variants encoding different isoforms have been found, but the full-length nature of some variants has not been determined. [provided by RefSeq, Jun 2013],

**Function :** function:Acts as guanine nucleotide exchange factor (GEF) for RhoA and RAC1 GTPases. Binding of APC may activate RAC1 GEF activity. The APC-ARHGEF4 complex seems to be involved in cell migration as well as in E-cadherin-mediated cell-cell adhesion.,sequence caution:Translation N-terminally extended.,similarity:Contains 1 DH (DBL-homology) domain.,similarity:Contains 1 PH domain.,similarity:Contains 1 SH3 domain.,subcellular location:Associated with membrane ruffles.,subunit:Isoform 3 interacts with RHOA and RAC1, and through its N-terminus with APC. Found in a complex consisting of ARHGEF4, APC and CTNNB1.,tissue specificity:Expressed at low levels in brain, kidney, lung and muscle.,

**Subcellular Location :** [Isoform 3]: Cytoplasm. Cell projection, ruffle membrane ; Peripheral membrane protein ; Cytoplasmic side . Associated with membrane ruffles. .

**Expression :** Expressed at high levels in the brain, skeletal muscle and testis and at low levels in the kidney, lung, small intestine, ovary and prostate. Expression is aberrantly enhanced in most colorectal tumors.

## Products Images



Western Blot analysis of HEK293 lysis, using primary antibody at 1:1000 dilution. Secondary antibody(catalog#:RS23920) was diluted at 1:10000