

**CTGF (PT0191R) PT® Rabbit mAb**

<b>Catalog No :</b>	YM8119
<b>Reactivity :</b>	Human; Mouse; Rat;
<b>Applications :</b>	WB;IP;ELISA
<b>Target :</b>	CTGF
<b>Fields :</b>	>>Apelin signaling pathway;>>Hippo signaling pathway
<b>Gene Name :</b>	CTGF CCN2 HCS24 IGFBP8
<b>Protein Name :</b>	Connective tissue growth factor (CCN family member 2) (Hypertrophic chondrocyte-specific protein 24) (Insulin-like growth factor-binding protein 8) (IBP-8) (IGF-binding protein 8) (IGFBP-8)
<b>Human Gene Id :</b>	1490
<b>Human Swiss Prot No :</b>	P29279
<b>Mouse Gene Id :</b>	14219
<b>Mouse Swiss Prot No :</b>	P29268
<b>Rat Swiss Prot No :</b>	Q9R1E9
<b>Specificity :</b>	endogenous
<b>Formulation :</b>	PBS, 50% glycerol, 0.05% Proclin 300, 0.05%BSA
<b>Source :</b>	Monoclonal, rabbit, IgG, Kappa
<b>Dilution :</b>	WB 1:500-2000,ELISA 1:5000-20000,IP 1:50-200
<b>Purification :</b>	Protein A
<b>Storage Stability :</b>	-15°C to -25°C/1 year(Do not lower than -25°C)

**Molecularweight :** 38kD

**Observed Band :** 38kD

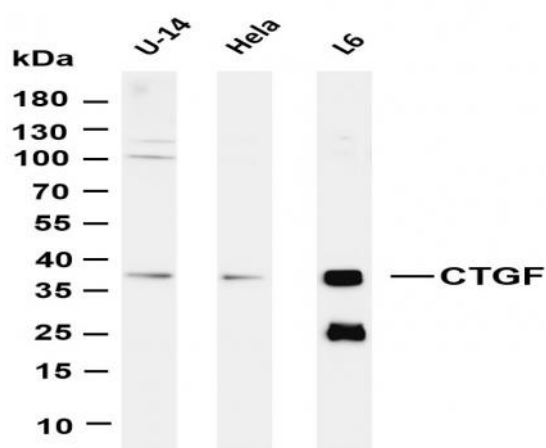
**Background :** The protein encoded by this gene is a mitogen that is secreted by vascular endothelial cells. The encoded protein plays a role in chondrocyte proliferation and differentiation, cell adhesion in many cell types, and is related to platelet-derived growth factor. Certain polymorphisms in this gene have been linked with a higher incidence of systemic sclerosis. [provided by RefSeq, Nov 2009],

**Function :** function:Major connective tissue mitoattractant secreted by vascular endothelial cells. Promotes proliferation and differentiation of chondrocytes. Mediates heparin- and divalent cation-dependent cell adhesion in many cell types including fibroblasts, myofibroblasts, endothelial and epithelial cells. Enhances fibroblast growth factor-induced DNA synthesis.,similarity:Belongs to the CCN family.,similarity:Contains 1 CTCK (C-terminal cystine knot-like) domain.,similarity:Contains 1 IGFBP N-terminal domain.,similarity:Contains 1 TSP type-1 domain.,similarity:Contains 1 VWFC domain.,subunit:Monomer.,

**Subcellular Location :** Secreted

**Expression :** Expressed in bone marrow and thymic cells. Also expressed one of two Wilms tumors tested.

## Products Images



Various whole cell lysates were separated by 4-20% SDS-PAGE, and the membrane was blotted with anti-CTGF (PT0191R) antibody. The HRP-conjugated Goat anti-Rabbit IgG(H + L) antibody was used to detect the antibody. Lane 1: U-14 Lane 2: HeLa Lane 3: L6 Predicted band size: 38kDa Observed band size: 38kDa