

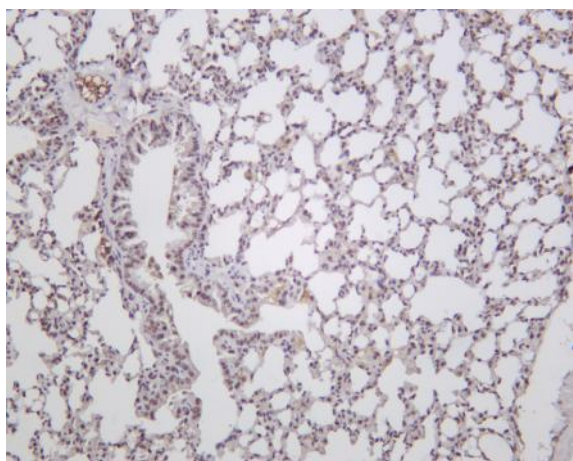
ATF-4 (PT0294R) PT® Rabbit mAb

Catalog No :	YM8169
Reactivity :	Human;Mouse;Rat;
Applications :	WB;IHC;IF;IP;ELISA
Target :	CREB-2
Fields :	>>MAPK signaling pathway;>>cGMP-PKG signaling pathway;>>Mitophagy - animal;>>Protein processing in endoplasmic reticulum;>>PI3K-Akt signaling pathway;>>Apoptosis;>>Longevity regulating pathway;>>Adrenergic signaling in cardiomyocytes;>>TNF signaling pathway;>>Long-term potentiation;>>Neurotrophin signaling pathway;>>Cholinergic synapse;>>Dopaminergic synapse;>>Insulin secretion;>>GnRH signaling pathway;>>Estrogen signaling pathway;>>Thyroid hormone synthesis;>>Glucagon signaling pathway;>>Aldosterone synthesis and secretion;>>Relaxin signaling pathway;>>Cortisol synthesis and secretion;>>Parathyroid hormone synthesis, secretion and action;>>Non-alcoholic fatty liver disease;>>Cushing syndrome;>>Growth hormone synthesis, secretion and action;>>Alzheimer disease;>>Parkinson disease;>>Amyotrophic lateral sclerosis;>>Prion disease;>>Pathways of neurodegeneration - multiple diseases;>>Cocaine addiction;>>Amphetamine addiction;>>Alcoholism;>>Hepatitis B;>>Human cytomegalovirus infection;>>Hu
Gene Name :	ATF4
Protein Name :	Cyclic AMP-dependent transcription factor ATF-4
Human Gene Id :	468
Human Swiss Prot No :	P18848
Mouse Gene Id :	11911
Mouse Swiss Prot No :	Q06507
Specificity :	endogenous
Formulation :	PBS, 50% glycerol, 0.05% Proclin 300, 0.05%BSA

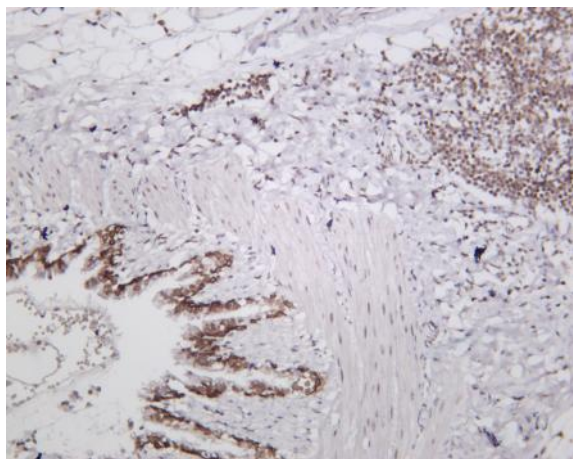
Source :	Monoclonal, rabbit, IgG, Kappa
Dilution :	IHC 1:100-1:200, WB 1:1000-1:5000, IF 1:200-1:1000, ELISA 1:5000-1:20000, IP 1:50-1:200,
Purification :	Protein A
Storage Stability :	-15°C to -25°C/1 year (Do not lower than -25°C)
Molecularweight :	38kD
Observed Band :	49kD
Background :	<p>activating transcription factor 4(ATF4) Homo sapiens This gene encodes a transcription factor that was originally identified as a widely expressed mammalian DNA binding protein that could bind a tax-responsive enhancer element in the LTR of HTLV-1. The encoded protein was also isolated and characterized as the cAMP-response element binding protein 2 (CREB-2). The protein encoded by this gene belongs to a family of DNA-binding proteins that includes the AP-1 family of transcription factors, cAMP-response element binding proteins (CREBs) and CREB-like proteins. These transcription factors share a leucine zipper region that is involved in protein-protein interactions, located C-terminal to a stretch of basic amino acids that functions as a DNA binding domain. Two alternative transcripts encoding the same protein have been described. Two pseudogenes are located on the X chromosome at q28 in a region containing a large inverted duplication. [provid</p>
Function :	<p>function:Transcriptional activator. Binds the cAMP response element (CRE) (consensus: 5'-GTGACGT[AC][AG]-3'), a sequence present in many viral and cellular promoters. It binds to a Tax-responsive enhancer element in the long terminal repeat of HTLV-I., similarity:Belongs to the bZIP family., similarity:Contains 1 bZIP domain., subcellular location:Colocalizes with GABBR1 in hippocampal neuron dendritic membranes., subunit:Interacts with the C-terminal region of GABBR1 via the leucine zipper of its C-terminal bZIP domain. Interacts with the C-terminal region of GABBR2 (By similarity). Binds DNA as a homo-or heterodimer. Interacts with the N-terminal region of CEP290.,</p>
Subcellular Location :	Nucleus
Expression :	Bladder, Colon, Fibroblast, Leukemic T-cell, Lung, Ovary, Placenta,

Products Images

Various whole cell lysates were separated by 4-20% SDS-PAGE, and the membrane was blotted with anti-ATF-4 (PT0294R) antibody. The HRP-conjugated Goat anti-Rabbit IgG(H + L) antibody was used to detect the antibody. Lane 1: Hela treated with serum for 30min Predicted band size: 38kDa Observed band size: 49kDa



Mouse lung was stained with Anti-ATF-4 (PT0294R) rabbit antibody



Rat lung was stained with Anti-ATF-4 (PT0294R) rabbit antibody