

AREB6 (PT0216R) PT® Rabbit mAb

Catalog No :	YM8138
Reactivity :	Human;Rat;
Applications :	WB;IHC;IF;IP;ELISA
Target :	ZEB1
Fields :	>>Transcriptional misregulation in cancer;>>MicroRNAs in cancer;>>Prostate cancer
Gene Name :	ZEB1 AREB6 TCF8
Protein Name :	Zinc finger E-box-binding homeobox 1 (N1L-2-A zinc finger protein) (Negative regulator of IL2) (Transcription factor 8) (TCF-8)
Human Gene Id :	6935
Human Swiss Prot No :	P37275
Mouse Swiss Prot No :	Q64318
Rat Swiss Prot No :	Q62947
Specificity :	endogenous
Formulation :	PBS, 50% glycerol, 0.05% Proclin 300, 0.05%BSA
Source :	Monoclonal, rabbit, IgG, Kappa
Dilution :	IHC 1:200-1:500,WB 1:1000-1:5000,IF 1:200-1:1000,ELISA 1:5000-1:20000,IP 1:50-1:200,
Purification :	Protein A
Storage Stability :	-15°C to -25°C/1 year(Do not lower than -25°C)
Molecularweight :	124kD

Observed Band : 200kD

Background :

This gene encodes a zinc finger transcription factor. The encoded protein likely plays a role in transcriptional repression of interleukin 2. Mutations in this gene have been associated with posterior polymorphous corneal dystrophy-3 and late-onset Fuchs endothelial corneal dystrophy. Alternatively spliced transcript variants encoding different isoforms have been described.[provided by RefSeq, Mar 2010],

Function :

disease:Defects in ZEB1 are the cause of posterior polymorphous corneal dystrophy type 3 (PPCD3) [MIM:609141]. Posterior polymorphous corneal dystrophy (PPCD) is a rare disease involving metaplasia and overgrowth of corneal endothelial cells. In patients with PPCD, these cells manifest in an epithelial morphology and gene expression pattern, produce an aberrant basement membrane, and, sometimes, spread over the iris and nearby structures in a way that increases the risk for glaucoma.,function:Inhibits interleukin-2 (IL-2) gene expression. May be responsible for transcriptional repression of the IL-2 gene. Enhances or represses the promoter activity of the ATP1A1 gene depending on the quantity of cDNA and on the cell type.,similarity:Belongs to the delta-EF1/ZFH-1 C2H2-type zinc-finger family.,similarity:Contains 1 homeobox DNA-binding domain.,similarity:Contains 7 C2H2-type zinc fingers.

Subcellular

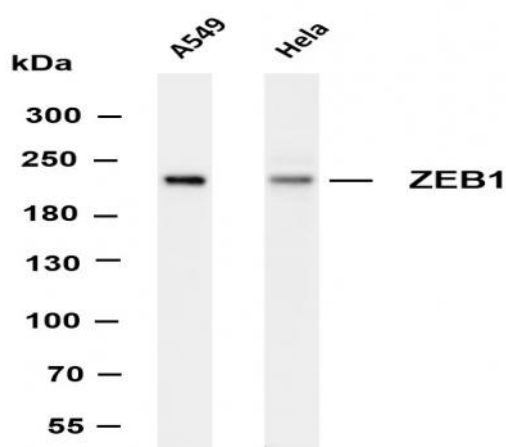
Location :

Nucleus

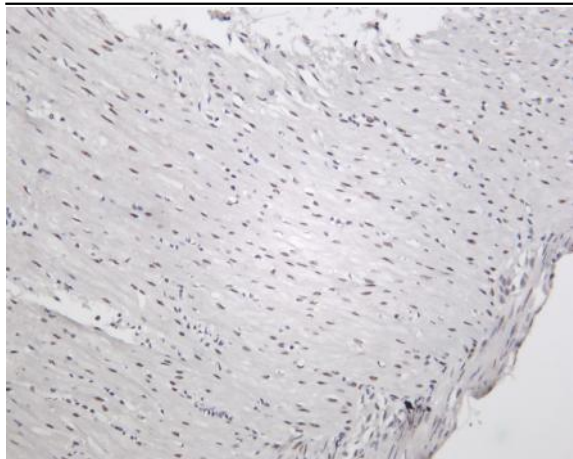
Expression :

Colocalizes with SMARCA4/BRG1 in E-cadherin-negative cells from established lines, and stroma of normal colon as well as in de-differentiated epithelial cells at the invasion front of colorectal carcinomas (at protein level). Expressed in heart and skeletal muscle, but not in liver, spleen, or pancreas.

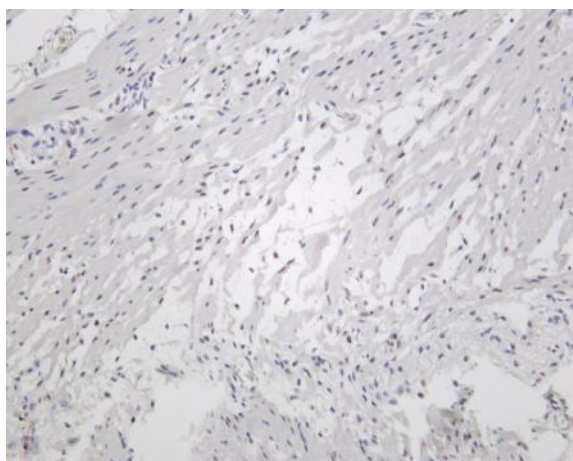
Products Images



Various whole cell lysates were separated by 4-8% SDS-PAGE, and the membrane was blotted with anti-ZEB1 (PT0216R) antibody. The HRP-conjugated Goat anti-Rabbit IgG(H + L) antibody was used to detect the antibody. Lane 1: A459 Lane 2: HeLa Predicted band size: 124kDa Observed band size: 200kDa



Rat colon was stained with Anti-ZEB1 (PT0216R) rabbit antibody



Human colon was stained with Anti-ZEB1 (PT0216R) rabbit antibody