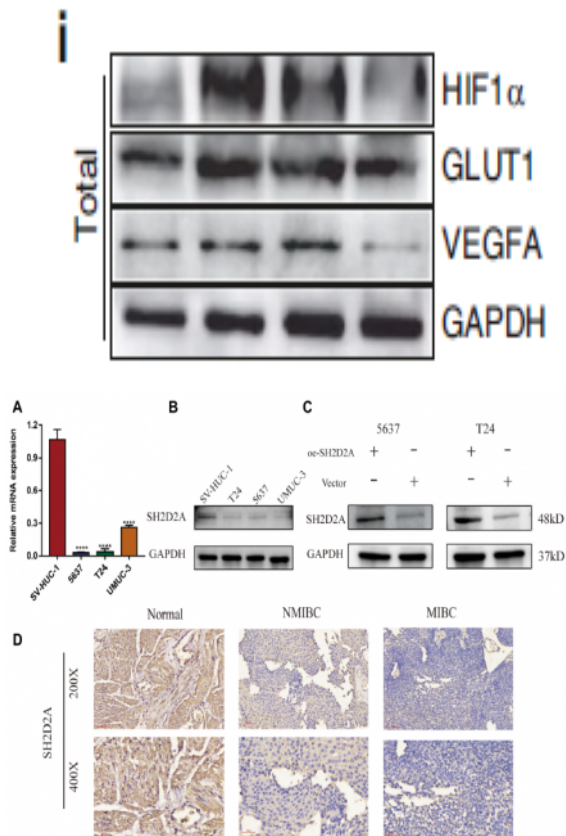


## HRP\* Goat Anti Rabbit IgG(H+L)

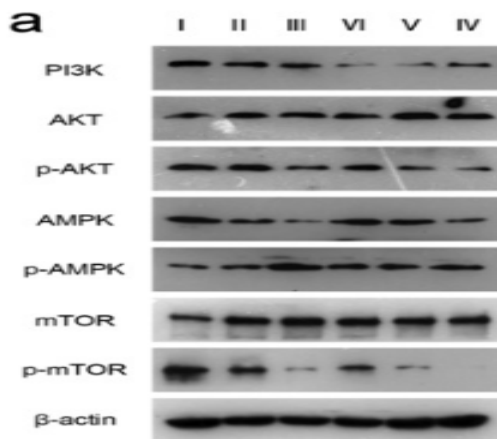
<b>Catalog No :</b>	RS0002
<b>Reactivity :</b>	Rabbit
<b>Applications :</b>	WB;IHC;ELISA
<b>Target :</b>	Rabbit IgG(H+L)
<b>Formulation :</b>	Liquid in PBS containing 50% glycerol, 0.5% BSA and 0.02% sodium azide.
<b>Source :</b>	Goat
<b>Dilution :</b>	WB 1:5000-20000;IHC 1:20-100;ELISA 1:5000-20000
<b>Purification :</b>	The antibody was affinity-purified from goat antiserum by affinity-chromatography using epitope-specific immunogen.
<b>Concentration :</b>	4 mg/ml
<b>Storage Stability :</b>	-15°C to -25°C/1 year(Do not lower than -25°C)
<b>Background :</b>	Immunoway secondary antibodies are available conjugated to enzyme, biotin or fluorophore for use in a variety of antibody-based applications including Western Blot, ImmunoHistoChemistry, ImmunoFluorescence, Flow Cytometry and ELISA. We offer high quality secondary antibodies from goat, rabbit and donkey sources for your each application. Serum adsorbed secondary antibodies are also available and are recommended for use with immunoglobulin-rich samples.

## Products Images

TBBPA causes apoptosis in grass carp hepatocytes involving destroyed ER-mitochondrial function. CHEMOSPHERE Shiwen Xu WB Fish 1:8000 L8824 cell



A novel CD8+ T cell-related gene signature for predicting the prognosis and immunotherapy efficacy in bladder cancer. INFLAMMATION RESEARCH Xu Ning WB Human 1:1000 5637 cell, T24 cell, UMUC-3 cell, SV-HUC-1 cell



Kang, Min, et al. "Autophagy was activated against the damages of placentas caused by nano-copper oral exposure." Ecotoxicology and Environmental Safety 220 (2021): 112364.

Western Blot analysis of flag-tag protein using primary antibody at various dilution. Secondary antibody(catalog#:RS0002) was diluted at 1:10000

