

FOXP3 (PT0211R) PT® Rabbit mAb

Catalog No :	YM8133
Reactivity :	Human;Mouse
Applications :	WB;IHC;IF;IP;ELISA
Target :	FOXP3
Fields :	>>Th17 cell differentiation;>>Inflammatory bowel disease
Gene Name :	FOXP3
Protein Name :	Forkhead box protein P3
Human Gene Id :	50943
Human Swiss Prot No :	Q9BZS1
Mouse Gene Id :	20371
Mouse Swiss Prot No :	Q99JB6
Specificity :	endogenous
Formulation :	PBS, 50% glycerol, 0.05% Proclin 300, 0.05%BSA
Source :	Monoclonal, rabbit, IgG, Kappa
Dilution :	IHC 1:200-1:1000,WB 1:1000-1:5000,IF 1:200-1:1000,ELISA 1:5000-1:20000,IP 1:50-1:200,
Purification :	Protein A
Storage Stability :	-15°C to -25°C/1 year(Do not lower than -25°C)
Molecularweight :	47kD

Observed Band : 47kD

Background :

The protein encoded by this gene is a member of the forkhead/winged-helix family of transcriptional regulators. Defects in this gene are the cause of immunodeficiency polyendocrinopathy, enteropathy, X-linked syndrome (IPEX), also known as X-linked autoimmunity-immunodeficiency syndrome. Alternatively spliced transcript variants encoding different isoforms have been identified. [provided by RefSeq, Jul 2008],

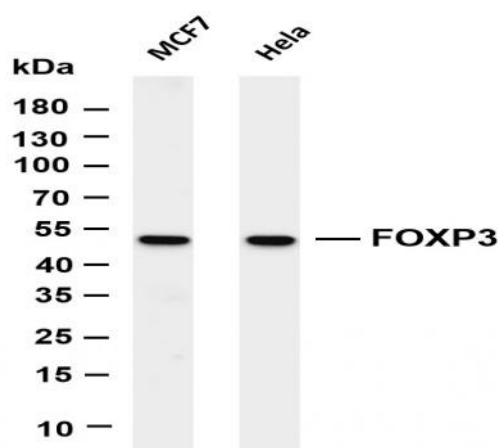
Function :

disease:Defects in FOXP3 are the cause of immunodeficiency polyendocrinopathy, enteropathy, X-linked syndrome (IPEX) [MIM:304790]; also known as X-linked autoimmunity-immunodeficiency syndrome. IPEX is characterized by neonatal onset insulin-dependent diabetes mellitus, infections, secretory diarrhea, thrombocytopenia, anemia and eczema. It is usually lethal in infancy.,function:Probable transcription factor. Plays a critical role in the control of immune response.,online information:FOXP3 entry,online information:FOXP3 mutation db,similarity:Contains 1 C2H2-type zinc finger.,similarity:Contains 1 fork-head DNA-binding domain.,

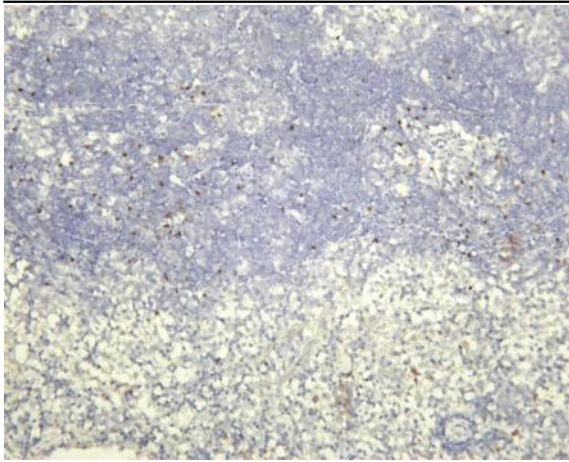
Subcellular Location :

Nucleus

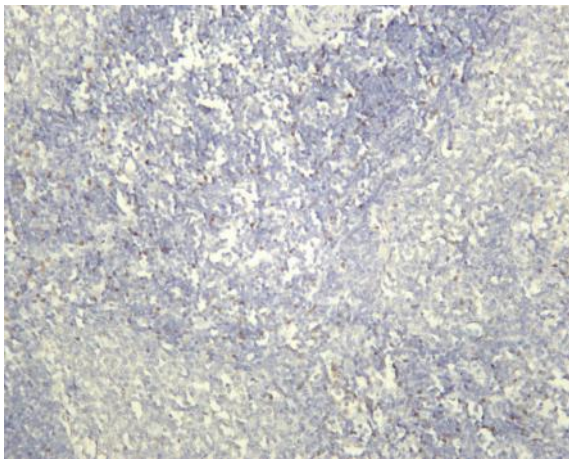
Products Images



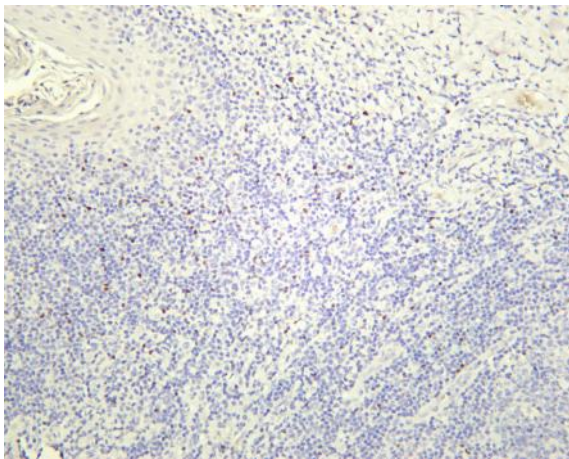
Various whole cell lysates were separated by 4-20% SDS-PAGE, and the membrane was blotted with anti-FOXP3 (PT0211R) antibody. The HRP-conjugated Goat anti-Rabbit IgG(H + L) antibody was used to detect the antibody. Lane 1: MCF7 Lane 2: HeLa Predicted band size: 47kDa Observed band size: 47kDa



Mouse spleen was stained with Anti-FOXP3 (PT0211R) rabbit antibody



Rat spleen was stained with Anti-FOXP3 (PT0211R) rabbit antibody



Human tonsil was stained with Anti-FOXP3 (PT0211R) rabbit antibody