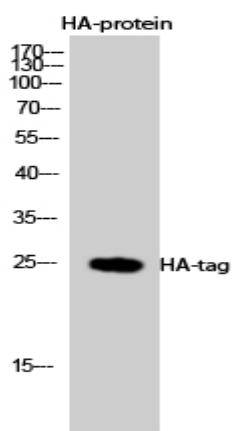


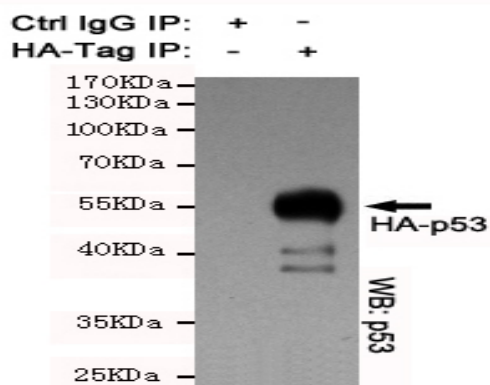
HA-tag Polyclonal Antibody

Catalog No :	YG0003
Reactivity :	Species independent
Applications :	WB;ELISA
Target :	HA-tag
Gene Name :	HA Tag
Protein Name :	HA-Tag
Immunogen :	HA synthetic peptide conjugated to KLH.
Specificity :	HA-tag Polyclonal Antibody detects HA-tagged recombinant proteins or HA-tagged proteins overexpressed in cells.
Formulation :	Liquid in PBS containing 50% glycerol, 0.5% BSA and 0.02% sodium azide.
Source :	Polyclonal, Rabbit,IgG
Dilution :	WB 1:1000 - 1:3000. Not yet tested in other applications.
Purification :	The antibody was affinity-purified from rabbit antiserum by affinity-chromatography using epitope-specific immunogen.
Concentration :	1 mg/ml
Storage Stability :	-15°C to -25°C/1 year(Do not lower than -25°C)
Observed Band :	15kD
Background :	The HA tag (Y-P-Y-D-V-P-D-Y-A) is derived from an epitope (amino acids 98-106) of the influenza hemagglutinin (HA) protein. HA tag is used as a general epitope tag in expression vectors for many recombinant proteins. The presence of HA tag facilitates the detection, isolation and purification of recombinant fusion proteins.

Products Images



Western Blot analysis using HA-tag Polyclonal Antibody against HEK293 cells transfected with vector overexpressing HA tag (1) and untransfected (2). Antibody was diluted at 1:2000. Secondary antibody(catalog#:RS0002) was diluted at 1:20000



IP analysis of HA-tag Polyclonal Antibody