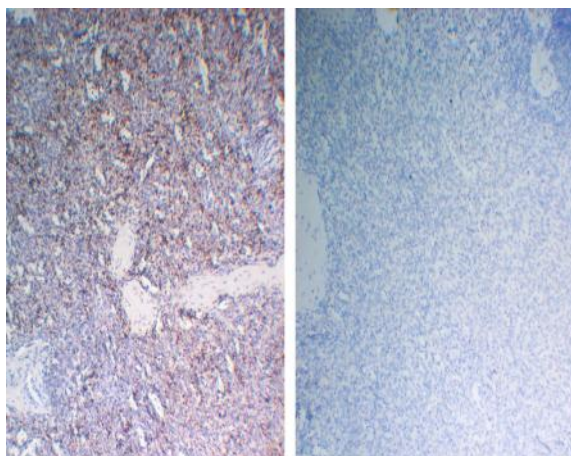


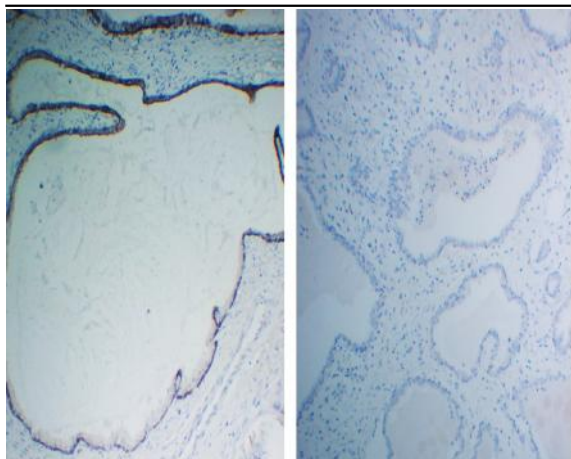
Negative Control for mouse IgG3, kappa Primary Antibody

| | |
|-------------------------------|---|
| Catalog No : | VN0004 |
| Reactivity : | Human;Mouse;Rat;Bovine;Pig;Chick; |
| Applications : | IHC;IP;IF;ELISA |
| Human Swiss Prot No : | / |
| Formulation : | PBS, 50% glycerol, 0.05% Proclin 300, 0.05%BSA |
| Source : | Mouse, Monoclonal/IgG3, kappa |
| Dilution : | IHC 1:200-1000. IF 1:100-500. ELISA 1:1000-5000 |
| Purification : | Protein G |
| Concentration : | 1 mg/ml |
| Storage Stability : | -15°C to -25°C/1 year(Do not lower than -25°C) |
| Subcellular Location : | No staining |

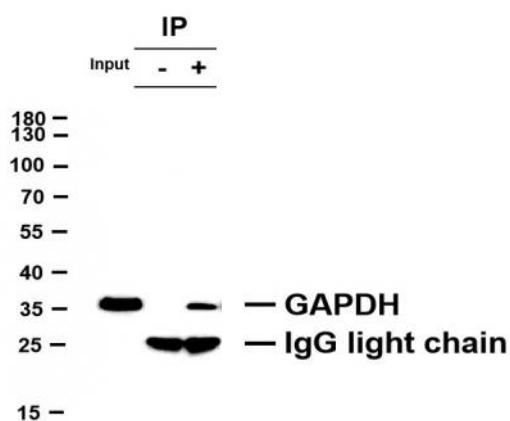
Products Images



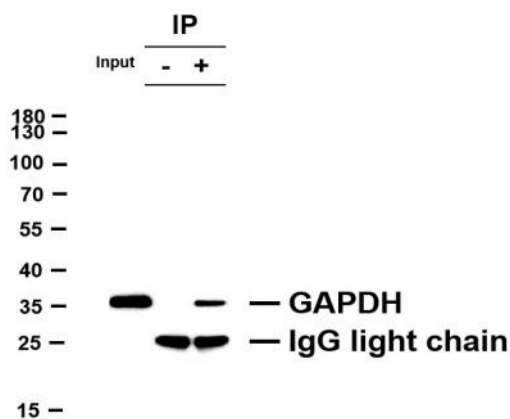
Immunohistochemical analysis of paraffin-embedded human spleen tissue using anti-CD42b mouse mAb (left) and mouse IgG3, kappa monoclonal control (VN004, right).



Immunohistochemical analysis of paraffin-embedded human prostate tissue using anti-Cytokeratin 14 mouse mAb (YM6031, left) and mouse IgG3, kappa monoclonal control (VN004, right).



GAPDH was immunoprecipitated from HeLa whole cell lysate with anti-GAPDH (PTR2304) antibody. Western blot was performed on the immunoprecipitate using anti-GAPDH antibody, and followed by the HRP-conjugated Goat anti-Mouse IgG (H + L) antibody. Lane 1 (Input) : HeLa whole cell lysate Lane 2 (-) : Mouse monoclonal IgG3 (vn0004, Isotype Control) instead of GAPDH antibody in HeLa whole cell lysate. Lane 3 (+) : GAPDH antibody IP in HeLa whole cell lysate



GAPDH was immunoprecipitated from SW480 whole cell lysate with anti-GAPDH (PTR2304) antibody. Western blot was performed on the immunoprecipitate using anti-GAPDH antibody, and followed by the HRP-conjugated Goat anti-Mouse IgG (H + L) antibody. Lane 1 (Input) : SW480 whole cell lysate Lane 2 (-) : Mouse monoclonal IgG3 (vn0004, Isotype Control) instead of GAPDH antibody in SW480 whole cell lysate. Lane 3 (+) : GAPDH antibody IP in SW480 whole cell lysate