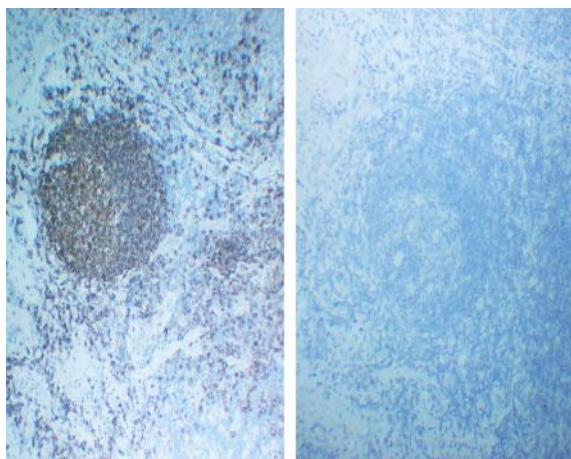


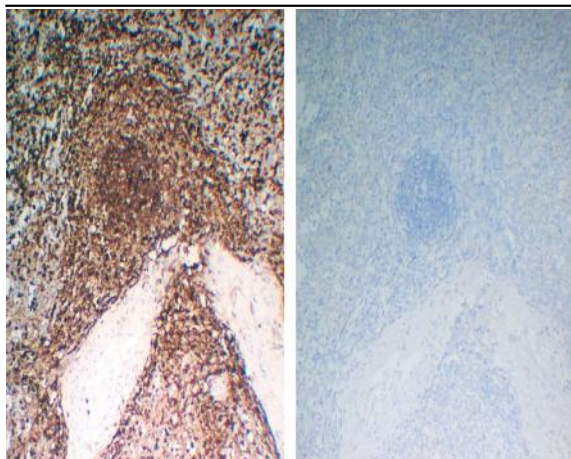
Negative Control for mouse IgG2b, kappa Primary Antibody

Catalog No :	VN0003
Reactivity :	Human;Mouse;Rat;Bovine;Pig;Chick;
Applications :	IHC;IP;IF;ELISA
Human Swiss Prot No :	/
Formulation :	PBS, 50% glycerol, 0.05% Proclin 300, 0.05%BSA
Source :	Mouse, Monoclonal/IgG2b, kappa
Dilution :	IHC 1:200-1000. IF 1:100-500. ELISA 1:1000-5000
Purification :	Protein G
Concentration :	1 mg/ml
Storage Stability :	-15°C to -25°C/1 year(Do not lower than -25°C)
Subcellular Location :	No staining

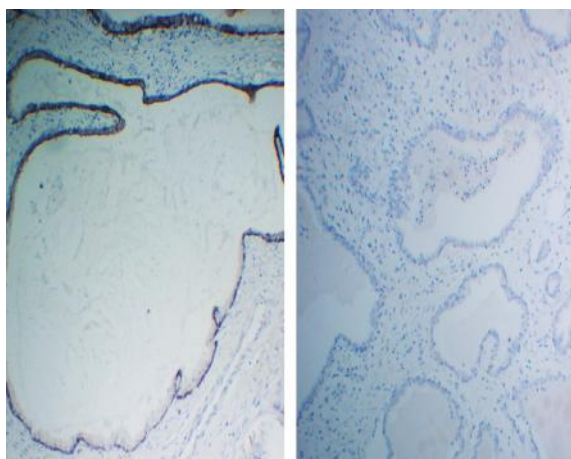
Products Images



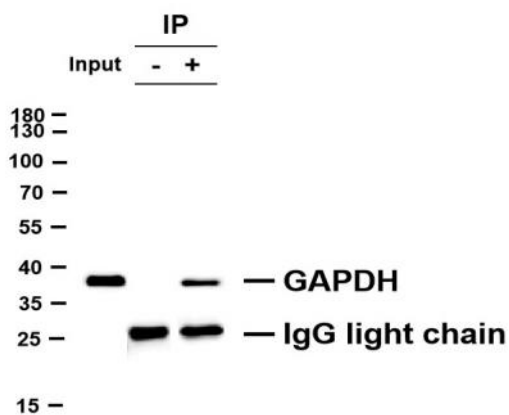
Immunohistochemical analysis of paraffin-embedded human tonsil tissue using anti-CD20 mouse mAb (ABT408, left) and mouse IgG2b, kappa monoclonal control (vn0003, right panel) .



Immunohistochemical analysis of paraffin-embedded human spleen tissue using anti-CD45 mouse mAb (left) and mouse IgG2b, kappa monoclonal control (VN003, right panel).



Immunohistochemical analysis of paraffin-embedded human prostate tissue using anti-Cytokeratin 14 mouse mAb (YM6031, left) and mouse IgG2b, kappa monoclonal control (VN003, right).



GAPDH was immunoprecipitated from HeLa whole cell lysate with anti-GAPDH (PTR2304) antibody. Western blot was performed on the immunoprecipitate using anti-GAPDH antibody, and followed by the HRP-conjugated Goat anti-Mouse IgG (H + L) antibody. Lane 1 (Input) : HeLa whole cell lysate Lane 2 (-) : Mouse monoclonal IgG1 (vn0003, Isotype Control) instead of GAPDH antibody in HeLa whole cell lysate. Lane 3 (+) : GAPDH antibody IP in HeLa whole cell lysate