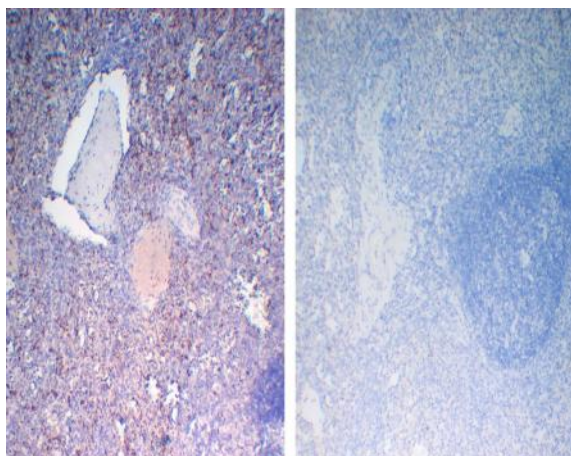


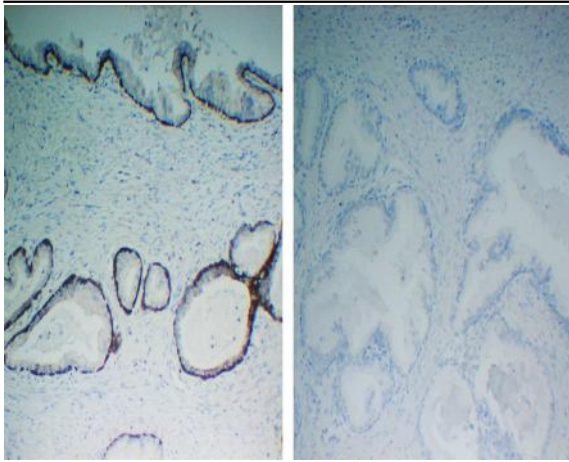
## Negative Control for mouse IgG2a, kappa Primary Antibody

<b>Catalog No :</b>	VN0002
<b>Reactivity :</b>	Human;Mouse;Rat;Bovine;Pig;Chick;
<b>Applications :</b>	IHC;IP;IF;ELISA
<b>Human Swiss Prot No :</b>	/
<b>Formulation :</b>	PBS, 50% glycerol, 0.05% Proclin 300, 0.05%BSA
<b>Source :</b>	Mouse, Monoclonal/IgG2a, kappa
<b>Dilution :</b>	IHC 1:200-1000. IF 1:100-500. ELISA 1:1000-5000
<b>Purification :</b>	Protein G
<b>Concentration :</b>	1 mg/ml
<b>Storage Stability :</b>	-15°C to -25°C/1 year(Do not lower than -25°C)
<b>Subcellular Location :</b>	No staining

## Products Images



Immunohistochemical analysis of paraffin-embedded human spleen tissue using anti-CD42b mouse mAb (left) and mouse IgG2a, kappa monoclonal control (VN002, right).



Immunohistochemical analysis of paraffin-embedded human prostate tissue using anti-Cytokeratin 14 mouse mAb (YM4064, left) and mouse IgG2a, kappa monoclonal control (VN002, right).