

## GRAP2 mouse mAb

<b>Catalog No :</b>	YM1453
<b>Reactivity :</b>	Human
<b>Applications :</b>	WB
<b>Target :</b>	GRAP2
<b>Fields :</b>	>>T cell receptor signaling pathway
<b>Gene Name :</b>	grap2
<b>Human Gene Id :</b>	9402
<b>Human Swiss Prot No :</b>	O75791
<b>Mouse Swiss Prot No :</b>	O89100
<b>Immunogen :</b>	Recombinant protein of human GRAP2.
<b>Specificity :</b>	This antibody detects endogenous levels of GRAP2 and does not cross-react with related proteins.
<b>Formulation :</b>	Liquid in PBS containing 50% glycerol, 0.5% BSA and 0.02% sodium azide.
<b>Source :</b>	Monoclonal, Mouse
<b>Dilution :</b>	wb dilution 1:1000
<b>Purification :</b>	The antibody was affinity-purified from mouse ascites by affinity-chromatography using epitope-specific immunogen.
<b>Concentration :</b>	1 mg/ml
<b>Storage Stability :</b>	-15°C to -25°C/1 year(Do not lower than -25°C)
<b>Observed Band :</b>	38kD

**Cell Pathway :** T\_Cell\_Receptor;

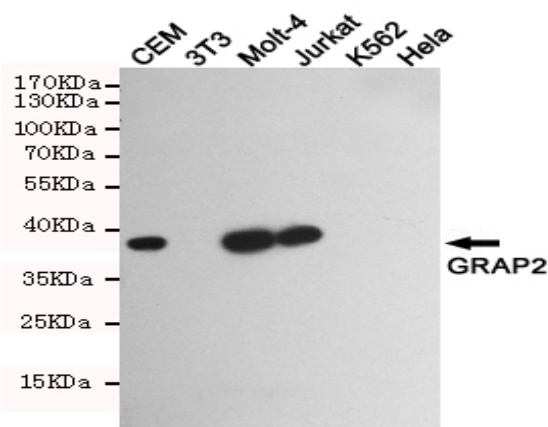
**Background :** This gene encodes a member of the GRB2/Sem5/Drk family. This member is an adaptor-like protein involved in leukocyte-specific protein-tyrosine kinase signaling. Like its related family member, GRB2-related adaptor protein (GRAP), this protein contains an SH2 domain flanked by two SH3 domains. This protein interacts with other proteins, such as GRB2-associated binding protein 1 (GAB1) and the SLP-76 leukocyte protein (LCP2), through its SH3 domains. Multiple alternatively spliced transcript variants encoding distinct isoforms have been found for this gene. [provided by RefSeq, Apr 2014],

**Function :** function:Interacts with SLP-76 to regulate NF-AT activation. Binds to tyrosine-phosphorylated shc.,similarity:Belongs to the GRB2/sem-5/DRK family.,similarity:Contains 1 SH2 domain.,similarity:Contains 2 SH3 domains.,subunit:Interacts with phosphorylated LIME1 upon TCR activation (By similarity). Interacts with phosphorylated LAT and LAX1 upon TCR activation. Interacts with SHB.,

**Subcellular Location :** Nucleus . Cytoplasm . Endosome .

**Expression :** Blood,Lung,Platelet,Spleen,T-cell,Thymus,

## Products Images



Western blot detection of GRAP2 in GRAP2 positive cell (CEM,Molt-4,Jurkat) and negative cell (3T3,K562,Hela) lysates using GRAP2 mouse mAb (1:1000 diluted).Predicted band size:38KDa.Observed band size:38KDa.