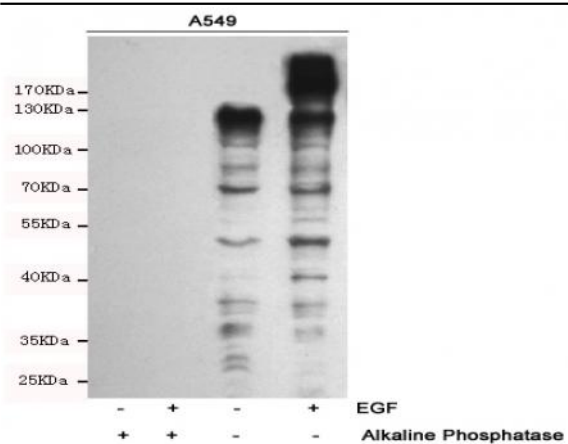


## Phospho Tyrosine mouse mAb

<b>Catalog No :</b>	YM1435
<b>Reactivity :</b>	Human;Mouse;Rat;AllSpeciesExpected
<b>Applications :</b>	WB
<b>Target :</b>	Phospho-Tyrosine
<b>Gene Name :</b>	py
<b>Human Gene Id :</b>	/
<b>Immunogen :</b>	Phospho-tyrosine containing peptides.
<b>Specificity :</b>	This antibody detects endogenous levels of Phospho-Tyrosine.
<b>Formulation :</b>	Liquid in PBS containing 50% glycerol, 0.5% BSA and 0.02% sodium azide.
<b>Source :</b>	Monoclonal, Mouse
<b>Dilution :</b>	wb dilution 1:1000
<b>Purification :</b>	The antibody was affinity-purified from mouse ascites by affinity-chromatography using epitope-specific immunogen.
<b>Concentration :</b>	1 mg/ml
<b>Storage Stability :</b>	-15°C to -25°C/1 year(Do not lower than -25°C)

## Products Images



Western blot analysis of extracts from A549 cells untreated and treated with Epidermal Growth Factor (10ng/ml,15min), using Phospho-Tyrosine Mouse mAb. The phospho-specificity of the antibody was further characterized by treating the membrane with alkaline phosphatase after Western transfer.