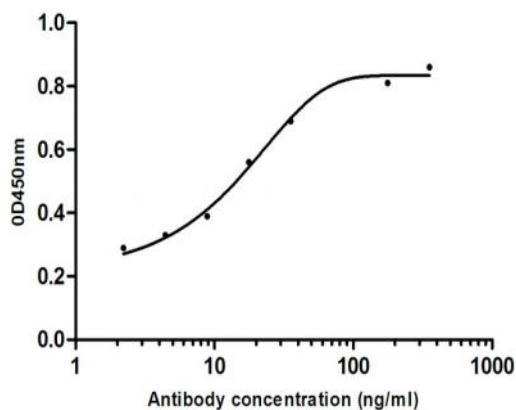


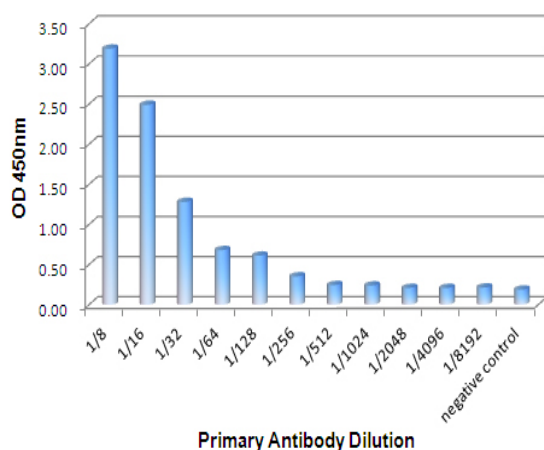
## Human IgG mouse mAb

<b>Catalog No :</b>	YM1423
<b>Reactivity :</b>	Human
<b>Applications :</b>	ELISA
<b>Target :</b>	Human IgG
<b>Gene Name :</b>	human igg
<b>Human Gene Id :</b>	
<b>Human Swiss Prot No :</b>	P01857;P01859;P01860;P01861
<b>Immunogen :</b>	Purified recombinant human Human IgG protein fragments expressed in E.coli.
<b>Specificity :</b>	This antibody detects the heavy chain of Human IgG and does not cross-react with Human IgM.
<b>Formulation :</b>	Liquid in PBS containing 50% glycerol, 0.5% BSA and 0.02% sodium azide.
<b>Source :</b>	Monoclonal, Mouse
<b>Dilution :</b>	ELISA 1:10000-20000
<b>Purification :</b>	The antibody was affinity-purified from mouse ascites by affinity-chromatography using epitope-specific immunogen.
<b>Concentration :</b>	1 mg/ml
<b>Storage Stability :</b>	-15°C to -25°C/1 year(Do not lower than -25°C)
<b>Observed Band :</b>	

## Products Images



Recombinant Anthrax Protective Antigen used as Coating antigen, followed by Anti-Anthrax Protective Antigen Human antibody and then incubated with Anti-Human IgG(201068) Mouse mAb, HRP conjugated goat anti Mouse IgG was used for coloring.



Recombinant Anthrax Protective Antigen used as Coating antigen, followed by different dilutions of supernatants which includes secreted Anti-Anthrax Protective Antigen Human antibody, HRP conjugated Anti-Human IgG(201068) Mouse mAb was used for coloring.