

Ferritin Light Chain mouse mAb

Catalog No :	YM1422
Reactivity :	Human
Applications :	ELISA
Target :	Ferritin Light Chain
Fields :	>>Ferroptosis;>>Necroptosis;>>Mineral absorption
Gene Name :	ftl
Human Gene Id :	2512
Human Swiss Prot No :	P02792
Immunogen :	Purified recombinant full length of human ferritin light chain protein expressed in E.coli.
Specificity :	This antibody detects recombinant ferritin proteins.
Formulation :	Liquid in PBS containing 50% glycerol, 0.5% BSA and 0.02% sodium azide.
Source :	Monoclonal, Mouse
Dilution :	ELISA 1:10000-20000
Purification :	The antibody was affinity-purified from mouse ascites by affinity-chromatography using epitope-specific immunogen.
Concentration :	1 mg/ml
Storage Stability :	-15°C to -25°C/1 year(Do not lower than -25°C)
Observed Band :	26kD
Background :	This gene encodes the light subunit of the ferritin protein. Ferritin is the major intracellular iron storage protein in prokaryotes and eukaryotes. It is composed of

24 subunits of the heavy and light ferritin chains. Variation in ferritin subunit composition may affect the rates of iron uptake and release in different tissues. A major function of ferritin is the storage of iron in a soluble and nontoxic state. Defects in this light chain ferritin gene are associated with several neurodegenerative diseases and hyperferritinemia-cataract syndrome. This gene has multiple pseudogenes. [provided by RefSeq, Jul 2008],

Function :

disease:Defects in FTL are the cause of hereditary hyperferritinemia-cataract syndrome (HHCS) [MIM:600886]. It is an autosomal dominant disease characterized by early-onset bilateral cataract. Affected patients have elevated level of circulating ferritin. HHCS is caused by mutations in the iron responsive element (IRE) of the FTL gene.,disease:Defects in FTL are the cause of neuroferritinopathy [MIM:606159]; also known as adult-onset basal ganglia disease. It is a movement disorder with heterogeneous presentations starting in the fourth to sixth decade. It is characterized by a variety of neurological signs including parkinsonism, ataxia, corticospinal signs, mild nonprogressive cognitive deficit and episodic psychosis. It is linked with decreased serum ferritin levels.,function:Stores iron in a soluble, non-toxic, readily available form. Important for iron homeostasis.,function:Stores i

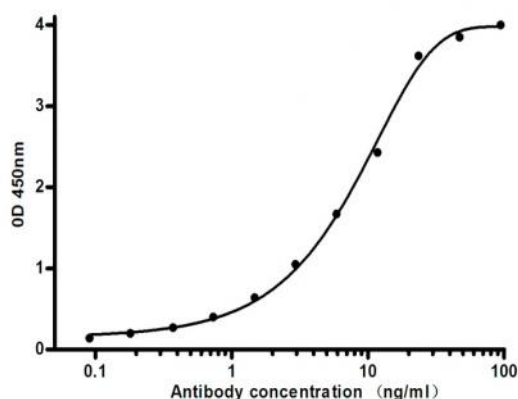
Subcellular Location :

cell,cytoplasm,cytosol,intracellular ferritin complex,membrane,autolysosome,extracellular exosome,

Expression :

Brain,Colon endothelium,Kidney,Liver,Placenta,Skin,Testis,Urinary bladder,

Products Images



Indirect ELISA assay for anti-Ferritin Light Chain mouse mAb.Antigen coating concentration: 4ug/ml.