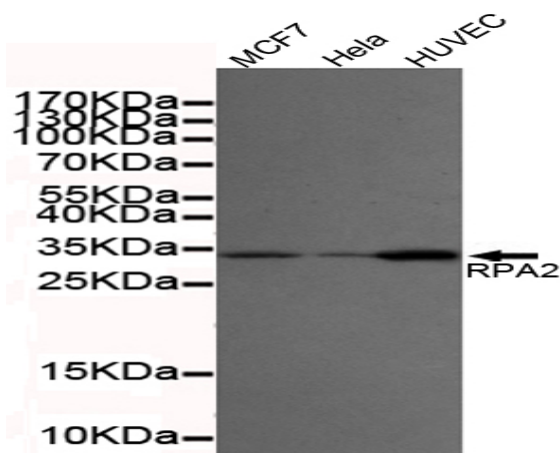


RPA32/RPA2 mouse mAb

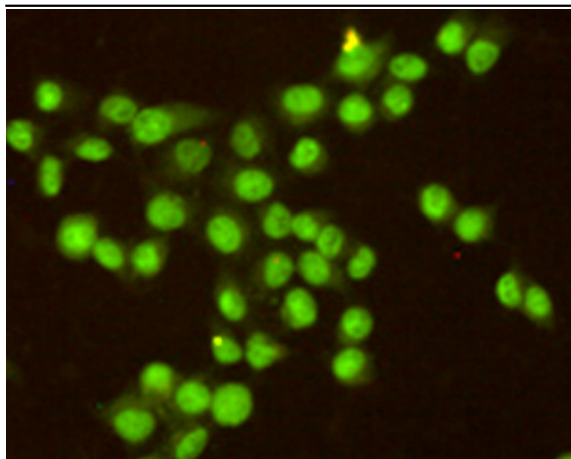
Catalog No :	YM1388
Reactivity :	Human
Applications :	WB;IP;ICC
Target :	RFA2
Fields :	>>DNA replication;>>Nucleotide excision repair;>>Mismatch repair;>>Homologous recombination;>>Fanconi anemia pathway
Gene Name :	rpa2
Human Gene Id :	6118
Human Swiss Prot No :	P15927
Mouse Swiss Prot No :	Q62193
Immunogen :	Purified recombinant human RPA32/RPA2 protein fragments expressed in E.coli.
Specificity :	This antibody detects endogenous levels of RPA32/RPA2 and does not cross-react with related proteins.
Formulation :	Liquid in PBS containing 50% glycerol, 0.5% BSA and 0.02% sodium azide.
Source :	Monoclonal, Mouse
Dilution :	wb dilution 1:2000 icc dilution 1:200
Purification :	The antibody was affinity-purified from mouse ascites by affinity-chromatography using epitope-specific immunogen.
Concentration :	1 mg/ml
Storage Stability :	-15°C to -25°C/1 year(Do not lower than -25°C)

Observed Band :	32kD
Cell Pathway :	DNA replication;Nucleotide excision repair;Mismatch repair;Homologous recombination;
Background :	function:Required for DNA recombination, repair and replication. The activity of RP-A is mediated by single-stranded DNA binding and protein interactions.,PTM:Phosphorylated in a cell-cycle-dependent manner (from the S phase until mitosis). Phosphorylated by ATR upon DNA damage, which promotes its translocation to nuclear foci. Can be phosphorylated in vitro by PRKDC/DNA-PK in the presence of Ku and DNA, and by CDC2.,subcellular location:Also present in PML nuclear bodies. Redistributes to discrete nuclear foci upon DNA damage.,subunit:Heterotrimer of 70, 32 and 14 kDa chains. The DNA-binding activity may reside exclusively on the 70 kDa subunit. Binds to SERTAD3/RBT1. Interacts with TIPIN.,
Function :	function:Required for DNA recombination, repair and replication. The activity of RP-A is mediated by single-stranded DNA binding and protein interactions.,PTM:Phosphorylated in a cell-cycle-dependent manner (from the S phase until mitosis). Phosphorylated by ATR upon DNA damage, which promotes its translocation to nuclear foci. Can be phosphorylated in vitro by PRKDC/DNA-PK in the presence of Ku and DNA, and by CDC2.,subcellular location:Also present in PML nuclear bodies. Redistributes to discrete nuclear foci upon DNA damage.,subunit:Heterotrimer of 70, 32 and 14 kDa chains. The DNA-binding activity may reside exclusively on the 70 kDa subunit. Binds to SERTAD3/RBT1. Interacts with TIPIN.,
Subcellular Location :	Nucleus . Nucleus, PML body . Redistributes to discrete nuclear foci upon DNA damage in an ATR-dependent manner. .
Expression :	Kidney,Lung,Muscle,

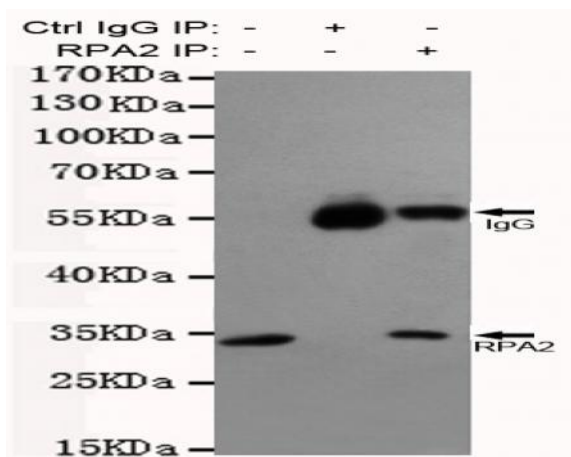
Products Images



Western blot detection of RPA32/RPA2 in MCF7,HeLa and HUVEC cell lysates using RPA32/RPA2 mouse mAb (1:2000 diluted).Predicted band size:32KDa.Observed band size:32KDa.Exposure time:20s.



Immunocytochemistry staining of HeLa cells fixed with -20°C Methanol and using anti-RPA32/RPA2 antibody (dilution 1:200).



Immunoprecipitation analysis of HeLa cell lysates using RPA32/RPA2 mouse mAb.