

## Calumenin mouse mAb

<b>Catalog No :</b>	YM1325
<b>Reactivity :</b>	Human;Mouse
<b>Applications :</b>	WB
<b>Target :</b>	Calumenin
<b>Gene Name :</b>	calu
<b>Human Gene Id :</b>	813
<b>Human Swiss Prot No :</b>	O43852
<b>Mouse Swiss Prot No :</b>	O35887
<b>Immunogen :</b>	Purified recombinant human Calumenin protein fragments expressed in E.coli.
<b>Specificity :</b>	This antibody detects endogenous levels of Calumenin and does not cross-react with related proteins.
<b>Formulation :</b>	Liquid in PBS containing 50% glycerol, 0.5% BSA and 0.02% sodium azide.
<b>Source :</b>	Monoclonal, Mouse
<b>Dilution :</b>	wb 1:1000
<b>Purification :</b>	The antibody was affinity-purified from mouse ascites by affinity-chromatography using epitope-specific immunogen.
<b>Concentration :</b>	1 mg/ml
<b>Storage Stability :</b>	-15°C to -25°C/1 year(Do not lower than -25°C)
<b>Observed Band :</b>	37kD
<b>Background :</b>	calumenin(CALU) Homo sapiens The product of this gene is a calcium-binding protein localized in the endoplasmic reticulum (ER) and it is involved in such ER

functions as protein folding and sorting. This protein belongs to a family of multiple EF-hand proteins (CERC) that include reticulocalbin, ERC-55, and Cab45 and the product of this gene. Alternatively spliced transcript variants encoding different isoforms have been identified. [provided by RefSeq, Oct 2008],

**Function :**

function:Involved in regulation of vitamin K-dependent carboxylation of multiple amino-terminal glutamate residues. Seems to inhibit gamma-carboxylase GGCX. Binds 7 calcium ions with a low affinity.,similarity:Belongs to the CREC family.,similarity:Contains 6 EF-hand domains.,subcellular location:Identified by mass spectrometry in melanosome fractions from stage I to stage IV.,subunit:Interacts with GGCX.,tissue specificity:Ubiquitously expressed. Expressed at high levels in heart, placenta and skeletal muscle, at lower levels in lung, kidney and pancreas and at very low levels in brain and liver.,

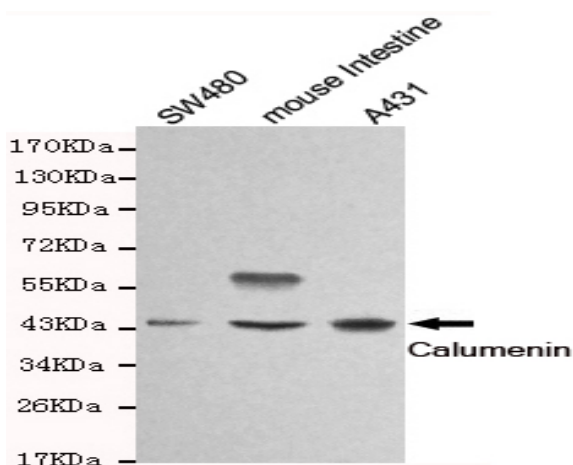
**Subcellular Location :**

Endoplasmic reticulum membrane . Golgi apparatus . Secreted . Melanosome . Sarcoplasmic reticulum lumen . Identified by mass spectrometry in melanosome fractions from stage I to stage IV. .

**Expression :**

Ubiquitously expressed. Expressed at high levels in heart, placenta and skeletal muscle, at lower levels in lung, kidney and pancreas and at very low levels in brain and liver.

## Products Images



Western blot detection of Calumenin in SW480, mouse intestine and A431 cell lysates and using Calumenin mouse mAb (1:1000 diluted). Predicted band size: 37KDa. Observed band size: 45KDa.