

## CHRDL1 mouse mAb

<b>Catalog No :</b>	YM1303
<b>Reactivity :</b>	Human
<b>Applications :</b>	WB;IHC;ICC
<b>Target :</b>	CHRDL1
<b>Gene Name :</b>	chrdl1
<b>Human Gene Id :</b>	91851
<b>Human Swiss Prot No :</b>	Q9BU40
<b>Mouse Swiss Prot No :</b>	Q920C1
<b>Immunogen :</b>	Purified recombinant human CHRDL1 protein fragments expressed in E.coli.
<b>Specificity :</b>	This antibody detects endogenous levels of CHRDL1 and does not cross-react with related proteins.
<b>Formulation :</b>	Liquid in PBS containing 50% glycerol, 0.5% BSA and 0.02% sodium azide.
<b>Source :</b>	Monoclonal, Mouse
<b>Dilution :</b>	wb 1:1000 IHC 1:300 icc 1:300
<b>Purification :</b>	The antibody was affinity-purified from mouse ascites by affinity-chromatography using epitope-specific immunogen.
<b>Concentration :</b>	1 mg/ml
<b>Storage Stability :</b>	-15°C to -25°C/1 year(Do not lower than -25°C)
<b>Observed Band :</b>	52kD
<b>Background :</b>	This gene encodes an antagonist of bone morphogenetic protein 4. The encoded protein may play a role in topographic retinotectal projection and in the

regulation of retinal angiogenesis in response to hypoxia. Alternatively spliced transcript variants encoding different isoforms have been described. [provided by RefSeq, Jan 2009],

**Function :**

function:Antagonizes the function of BMP4 by binding to it and preventing its interaction with receptors. Alters the fate commitment of neural stem cells from gliogenesis to neurogenesis. Contributes to neuronal differentiation of neural stem cells in the brain by preventing the adoption of a glial fate. May play a crucial role in dorsoventral axis formation. May play a role in embryonic bone formation (By similarity). May also play an important role in regulating retinal angiogenesis through modulation of BMP4 actions in endothelial cells.,induction:By hypoxia in retinal pericytes.,similarity:Contains 3 VWFC domains.,tissue specificity:Expressed in retinal pericytes.,

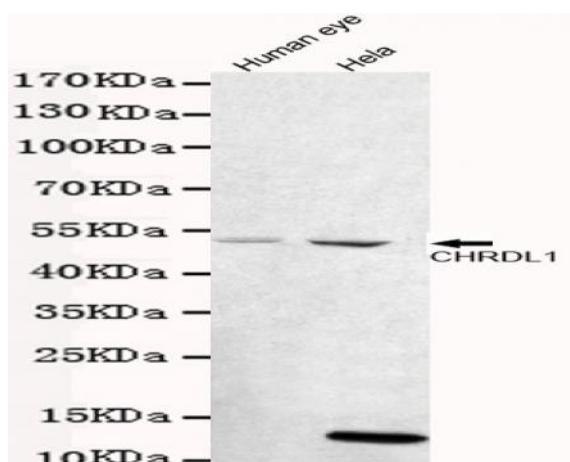
**Subcellular Location :**

Secreted .

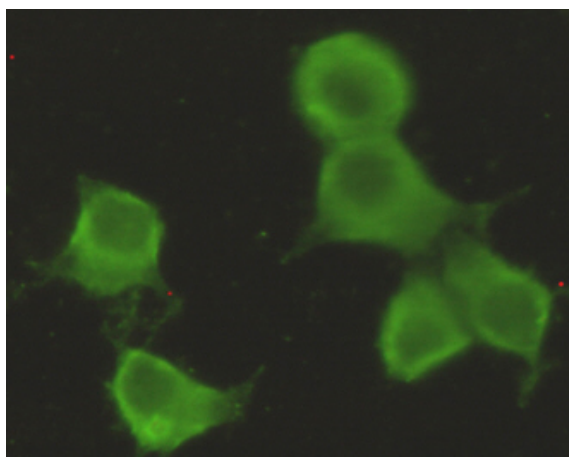
**Expression :**

Expressed in the developing cornea and in the eye anterior segment in addition to the retina. Differentially expressed in the fetal brain. There is high expression in cerebellum and neocortex. Expressed in retinal pericytes.

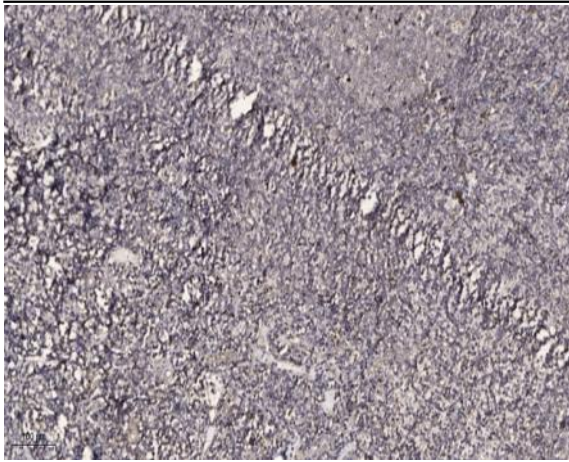
## Products Images



Western blot detection of CHRDL1 in human eye and HeLa cell lysates using CHRDL1 mouse mAb (1:1000 diluted). Predicted band size: 57kDa. Observed band size: 52kDa.



Immunocytochemistry stain of HeLa using CHRDL1 mouse mAb (1:300).



Immunohistochemical analysis of paraffin-embedded human tonsil. 1, Antibody was diluted at 1:200(4° overnight). 2, Tris-EDTA,pH9.0 was used for antigen retrieval. 3,Secondary antibody was diluted at 1:200(room temperature, 30min).