

GTF2H1 mouse mAb

Catalog No :	YM1262
Reactivity :	Human
Applications :	WB;IP;ICC
Target :	TFIIH p62
Fields :	>>Basal transcription factors;>>Nucleotide excision repair;>>Viral carcinogenesis
Gene Name :	gtf2h1
Human Gene Id :	2965
Human Swiss Prot No :	P32780
Mouse Swiss Prot No :	Q9DBA9
Immunogen :	Purified recombinant human GTF2H1 protein fragments expressed in E.coli.
Specificity :	This antibody detects endogenous levels of GTF2H1 and does not cross-react with related proteins.
Formulation :	Liquid in PBS containing 50% glycerol, 0.5% BSA and 0.02% sodium azide.
Source :	Monoclonal, Mouse
Dilution :	wb 1:300 icc 1:50
Purification :	The antibody was affinity-purified from mouse ascites by affinity-chromatography using epitope-specific immunogen.
Concentration :	1 mg/ml
Storage Stability :	-15°C to -25°C/1 year(Do not lower than -25°C)
Observed Band :	62kD

Cell Pathway : Basal transcription factors;Nucleotide excision repair;

Background : function:Component of the core-TFIIH basal transcription factor involved in nucleotide excision repair (NER) of DNA and, when complexed to CAK, in RNA transcription by RNA polymerase II.,PTM:Phosphorylated.,similarity:Contains 2 BSD domains.,subunit:One of the six subunits forming the core-TFIIH basal transcription factor. Interacts with PUF60.,

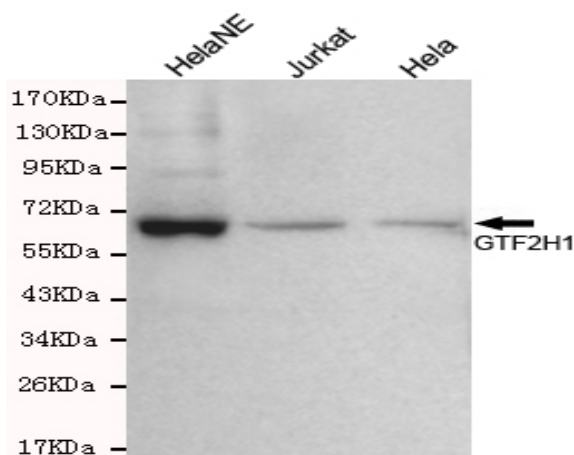
Function : function:Component of the core-TFIIH basal transcription factor involved in nucleotide excision repair (NER) of DNA and, when complexed to CAK, in RNA transcription by RNA polymerase II.,PTM:Phosphorylated.,similarity:Contains 2 BSD domains.,subunit:One of the six subunits forming the core-TFIIH basal transcription factor. Interacts with PUF60.,

Subcellular Location : Nucleus.

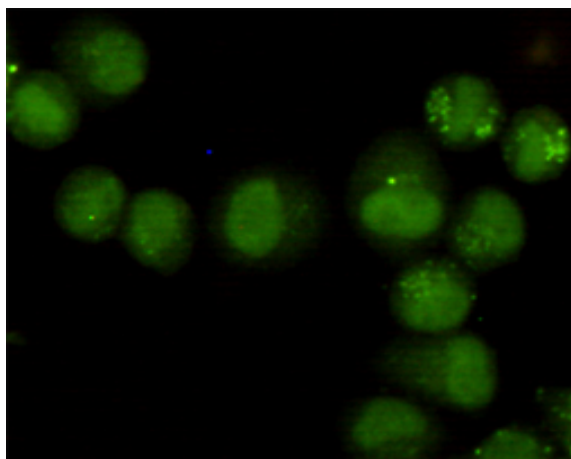
Location :

Expression : Liver,Lung,

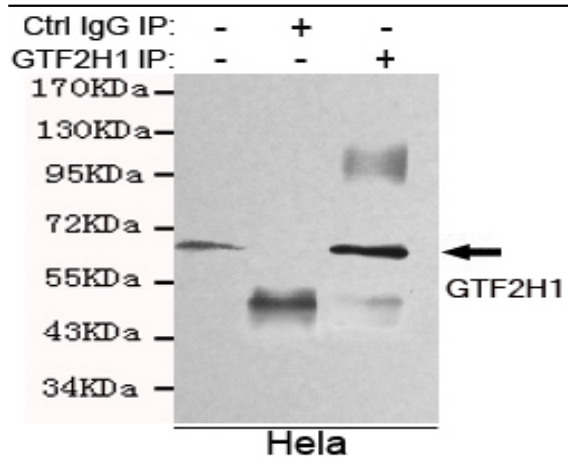
Products Images



Western blot detection of GTF2H1 in HeLa,HeLa NE and Jurkat cell lysates using GTF2H1 mouse mAb (1:300 diluted).Predicted band size: 62KDa.Observed band size: 62KDa.



Immunocytochemistry staining of HeLa cells fixed with 4% Paraformaldehyde and using GTF2H1 mouse mAb (dilution 1:50).



Immunoprecipitation analysis of HeLa cell lysates using GTF2H1 mouse mAb.