

Annexin A1 mouse mAb

Catalog No :	YM1434
Reactivity :	Human;Mouse;Rat;Monkey
Applications :	WB
Target :	Annexin I
Gene Name :	anxa1
Human Gene Id :	301
Human Swiss Prot No :	P04083
Mouse Swiss Prot No :	P10107
Immunogen :	Purified recombinant human Annexin A1 beta protein fragments expressed in E.coli.
Specificity :	This antibody detects endogenous levels of Annexin A1 and does not cross-react with related proteins.
Formulation :	Liquid in PBS containing 50% glycerol, 0.5% BSA and 0.02% sodium azide.
Source :	Monoclonal, Mouse
Dilution :	wb dilution 1:1000
Purification :	The antibody was affinity-purified from mouse ascites by affinity-chromatography using epitope-specific immunogen.
Concentration :	1 mg/ml
Storage Stability :	-15°C to -25°C/1 year(Do not lower than -25°C)
Observed Band :	38kD
Background :	This gene encodes a membrane-localized protein that binds phospholipids. This

protein inhibits phospholipase A2 and has anti-inflammatory activity. Loss of function or expression of this gene has been detected in multiple tumors. [provided by RefSeq, Dec 2014],

Function :

domain:A pair of annexin repeats may form one binding site for calcium and phospholipid.,function:Calcium/phospholipid-binding protein which promotes membrane fusion and is involved in exocytosis. This protein regulates phospholipase A2 activity. It seems to bind from two to four calcium ions with high affinity.,PTM:Phosphorylated by protein kinase C, epidermal growth factor receptor/kinase and TRPM7. Phosphorylation results in loss of the inhibitory activity.,similarity:Belongs to the annexin family.,similarity:Contains 1 annexin repeat.,similarity:Contains 2 annexin repeats.,similarity:Contains 4 annexin repeats.,subcellular location:Found in the cilium, nucleus and basolateral cell membrane of ciliated cells in the tracheal endothelium (By similarity). Found in the cytoplasm of type II pneumocytes and alveolar macrophages.,subunit:Homodimer in placenta (20%); linked by transglutamylat

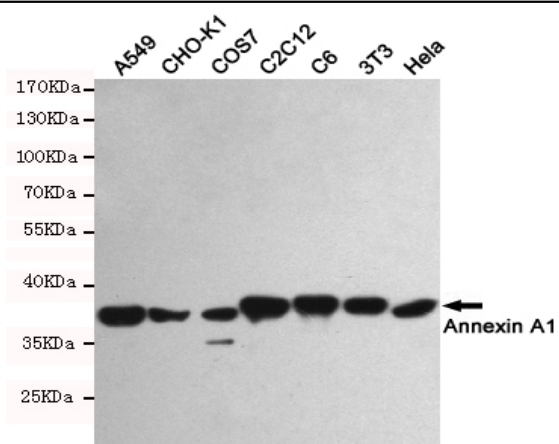
Subcellular Location :

Nucleus . Cytoplasm . Cell projection, cilium . Cell membrane . Membrane ; Peripheral membrane protein . Endosome membrane ; Peripheral membrane protein . Basolateral cell membrane . Apical cell membrane . Lateral cell membrane . Secreted . Secreted, extracellular space . Cell membrane ; Peripheral membrane protein ; Extracellular side . Secreted, extracellular exosome . Cytoplasmic vesicle, secretory vesicle lumen . Cell projection, phagocytic cup . Early endosome . Cytoplasmic vesicle membrane ; Peripheral membrane protein . Secreted, at least in part via exosomes and other secretory vesicles. Detected in exosomes and other extracellular vesicles (PubMed:25664854). Alternatively, the secretion is dependent on protein unfolding and facilitated by the cargo receptor TMED10; it results in t

Expression :

Detected in resting neutrophils (PubMed:10772777). Detected in peripheral blood T-cells (PubMed:17008549). Detected in extracellular vesicles in blood serum from patients with inflammatory bowel disease, but not in serum from healthy donors (PubMed:25664854). Detected in placenta (at protein level) (PubMed:2532504). Detected in liver.

Products Images



Western blot detection of Annexin A1 in A549, CHO-K1, COS7, C2C12, C6, 3T3 and HeLa cell lysates using Annexin A1 mouse mAb (1:1000 diluted). Predicted band size: 38 kDa. Observed band size: 38 kDa.