

KDM1/LSD1 mouse mAb

Catalog No :	YM1203
Reactivity :	Human;Monkey
Applications :	WB;ICC;IP
Target :	KDM1/LSD1
Fields :	>>Thermogenesis
Gene Name :	kdm1a
Human Gene Id :	23028
Human Swiss Prot No :	O60341
Mouse Swiss Prot No :	Q6ZQ88
Immunogen :	Purified recombinant human KDM1/LSD1 protein fragments expressed in E.coli.
Specificity :	This antibody detects endogenous levels of KDM1/LSD1 and does not cross-react with related proteins.
Formulation :	Liquid in PBS containing 50% glycerol, 0.5% BSA and 0.02% sodium azide.
Source :	Monoclonal, Mouse
Dilution :	wb 1:1000 icc 1:100
Purification :	The antibody was affinity-purified from mouse ascites by affinity-chromatography using epitope-specific immunogen.
Concentration :	1 mg/ml
Storage Stability :	-15°C to -25°C/1 year(Do not lower than -25°C)
Observed Band :	110kD

Background :

This gene encodes a nuclear protein containing a SWIRM domain, a FAD-binding motif, and an amine oxidase domain. This protein is a component of several histone deacetylase complexes, though it silences genes by functioning as a histone demethylase. Alternative splicing results in multiple transcript variants. [provided by RefSeq, Apr 2009],

Function :

cofactor:FAD.,domain:The SWIRM domain may act as an anchor site for a histone tail.,function:Histone demethylase that demethylates 'Lys-4' of histone H3, a specific tag for epigenetic transcriptional activation, thereby acting as a corepressor. Acts by oxidizing the substrate by FAD to generate the corresponding imine that is subsequently hydrolyzed. Demethylates both mono- and di-methylated 'Lys-4' of histone H3. May play a role in the repression of neuronal genes. Alone, it is unable to demethylate H3 'Lys-4' on nucleosomes and requires the presence of RCOR1/CoREST to achieve such activity. May also demethylate 'Lys-9' of histone H3, a specific tag for epigenetic transcriptional repression, thereby leading to derepression of androgen receptor target genes. Demethylates di-methylated 'Lys-370' of p53/TP53 which prevents interaction of p53/TP53 with TP53BP1 and represses p53/TP53-mediate

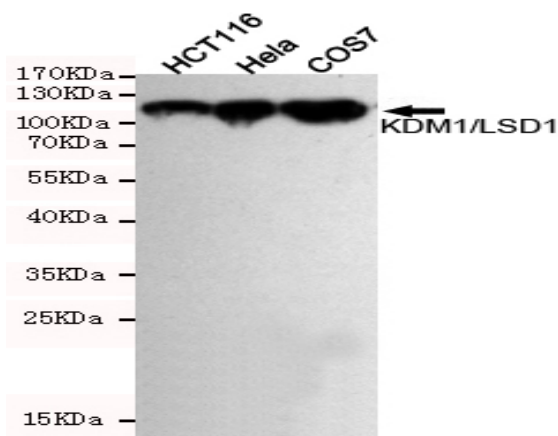
Subcellular Location :

Nucleus .

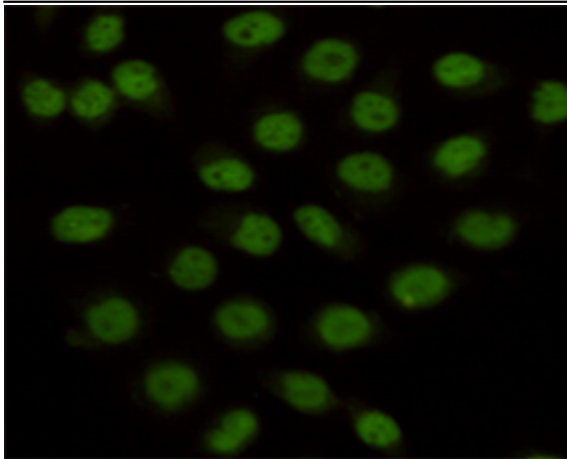
Expression :

Ubiquitously expressed.

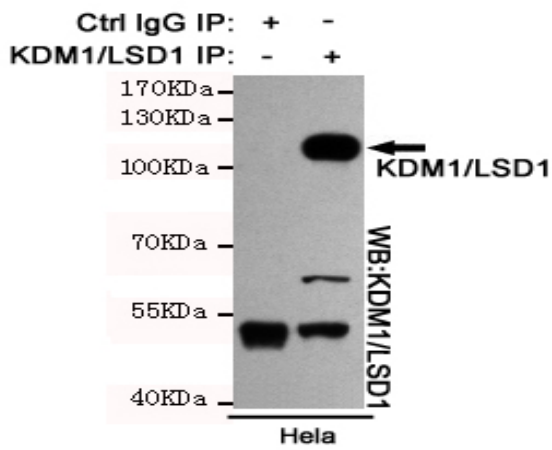
Products Images



Western blot detection of KDM1/LSD1 in HeLa, HCT116 and COS7 cell lysates using KDM1/LSD1 mouse mAb (1:1000 diluted). Predicted band size: 110 kDa. Observed band size: 110 kDa.



Immunocytochemistry staining of HeLa cells fixed with 4% Paraformaldehyde and using anti-KDM1/LSD1 mouse mAb (dilution 1:100).



Immunoprecipitation analysis of HeLa cell lysates using KDM1/LSD1 mouse mAb.